



Benham & Reeves

Highbury Stadium Square, Highbury, N5

£465 per week, £2,015 per month + fees

🛏️ 2 Bedrooms 🚿 2 Bathrooms 🛋️ Unfurnished

A well-presented two bedroom apartment set in the prestigious Highbury Stadium Square development, on the site of the former Arsenal stadium. Residents benefit from access to a concierge and communal gardens.

Please [click here](#) for full detail

Property features

2 Bedrooms | 2 Bathrooms | Reception | Unfurnished | Fitted Kitchen | EPC-B | 24 Hour Concierge, Lift Access, Communal Garden | On-Site Gym and Swimming Pool (Membership Required) | Nearby Arsenal Tube Station

For more information about this property,
please call our Highgate branch on

020 8341 2335

Redress & Client Money Protection :

Benham and Reeves are members of The Property Ombudsman redress scheme and have Client Money protection with ARLA Propertymark. You can find more information on our website at <https://www.benhams.com/membership/>



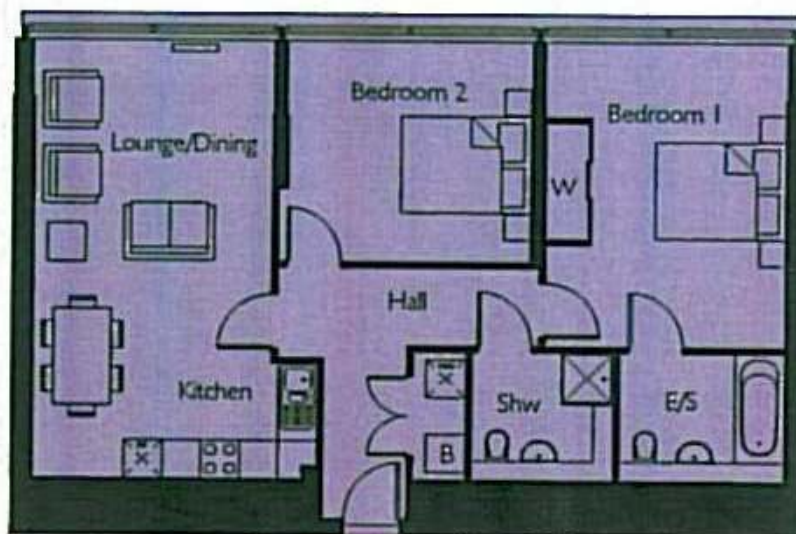
Benham & Reeves



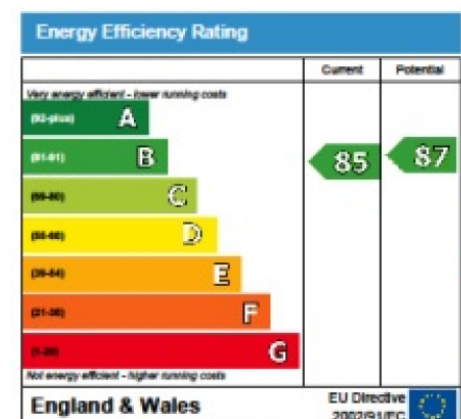
Highbury Stadium Square, Highbury, N5

£465 per week, £2,015 per month + fees

www.benhams.com



Lounge/Dining	5045mm x 3750mm	16'6" x 12'3"
Kitchen	4415mm x 1800mm	14'5" x 5'10"
Bedroom 1	4745mm* x 3750mm	15'6" x 12'3"
Bedroom 2	3800mm x 3444mm	12'5" x 11'3"
Area	80.5 m ²	866.4 sq.ft



The energy efficiency rating is a measure of the overall efficiency of a home. The higher the rating the more energy efficient the home is and the lower the fuel bills are likely to be.

London branches open six days a week Mon - Sat

Canary Wharf | City | Colindale | Dartmouth Park | Ealing | Fulham
Hammersmith | Hampstead | Highgate | Hyde Park | Kensington | Kew
Knightsbridge | Nine Elms | Shoreditch | Southall | Surrey Quays
Wapping | Wembley | White City | Woolwich

International offices

China | Hong Kong SAR | India | Indonesia | Qatar | Malaysia | Middle East | Pakistan
Singapore | South Africa | Thailand | Turkey



Benham & Reeves