



Benham & Reeves

Highbury Stadium Square, Highbury, N5

£495 per week, £2,145 per month + fees

 1 Bedroom  1 Bathroom  Unfurnished

UNFURNISHED. A well-proportioned one bedroom duplex apartment set in the East Stand at Highbury Stadium Square, a popular residential development which was previously the former Arsenal football stadium. The development benefits from an impressive 2-acre communal garden and is moments away from local transport links.

Please [click here](#) for full detail

Property features

1 Double Bedroom | 1 Reception | Fully fitted modern kitchen | Unfurnished | Luxury bathroom | EPC-B | 24 hours concierge, secured and gated | Communal Garden | Close to Arsenal and Drayton Park Station

For more information about this property,
please call our Highgate branch on

020 8341 2335



Redress & Client Money Protection :
Benham and Reeves are members of The Property Ombudsman redress scheme and have Client Money protection with ARLA Propertymark.
You can find more information on our website at <https://www.benhams.com/membership/>

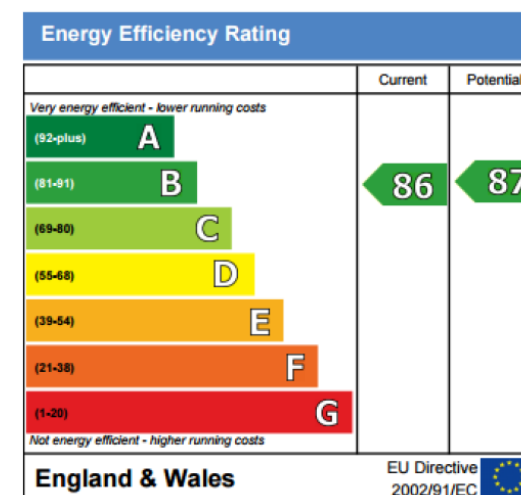
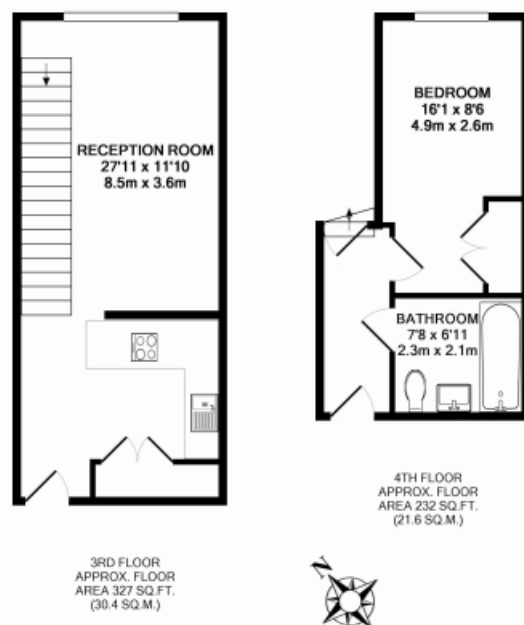
Benham & Reeves



Highbury Stadium Square, Highbury, N5

£495 per week, £2,145 per month + fees

www.benhams.com



London branches open six days a week Mon - Sat

Canary Wharf | City | Colindale | Dartmouth Park | Ealing | Fulham
Hammersmith | Hampstead | Highgate | Hyde Park | Kensington | Kew
Knightsbridge | Nine Elms | Shoreditch | Southall | Surrey Quays
Wapping | Wembley | White City | Woolwich

International offices

China | Hong Kong SAR | India | Israel | Malaysia | Middle East | Pakistan
Qatar | Singapore | South Africa | Thailand | Turkey



Benham & Reeves