



Benham & Reeves

Coster Avenue, Highgate, N4

£390 per week, £1,690 per month + fees

 1 Bedroom  1 Bathroom  Furnished

AVAILABLE NOW FOR 5 MONTHS ONLY!

An exceptional brand-new 4th floor apartment close to the amenities of Finsbury Park and surrounded by open spaces. Within walking distance from Manor House (Piccadilly Line) underground station.

Please [click here](#) for full detail

Property features

Spacious Reception | Floor-To-Ceiling Windows | 24-hour concierge | Fully Fitted Modern Kitchen | Bedroom With Built-In Wardrobes | EPC-B | Utility Room with storage space | communal lift and video-entry phone system | Gym and Swimming Pool | Manor House (Piccadilly Line) underground station

For more information about this property,
please call our Highgate branch on

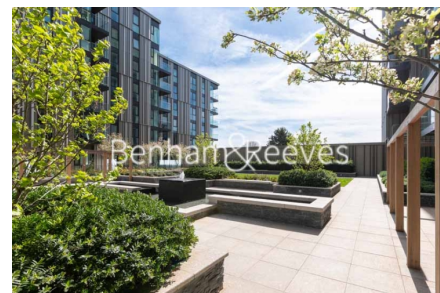
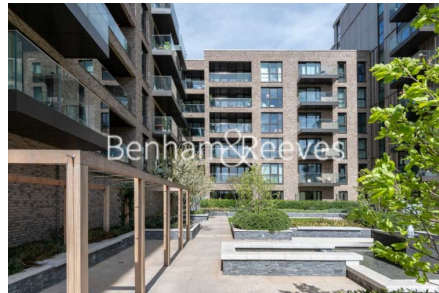
020 8341 2335

Redress & Client Money Protection :

Benham and Reeves are members of The Property Ombudsman redress scheme and have Client Money protection with ARLA Propertymark. You can find more information on our website at <https://www.benhams.com/membership/>



Benham & Reeves

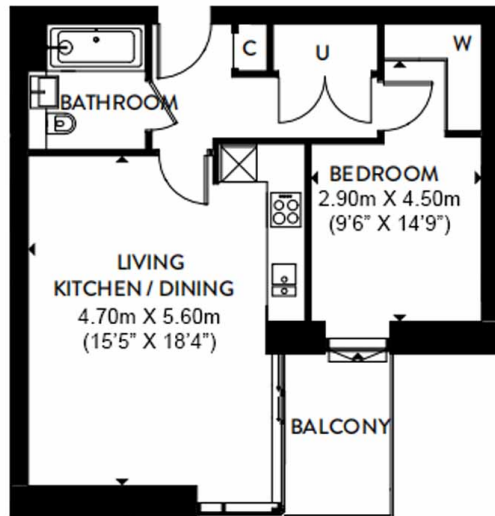


Coster Avenue, Highgate, N4

£390 per week, £1,690 per month + fees

www.benhams.com

Total Gross Internal Area
51.8 Sq/m - 558 Sq/ft



Floor Plan measurements are approximate and are for illustrative purposes only. While we do not doubt the floor plans accuracy, we make no guarantee, warranty or representation as to the accuracy and completeness of the floor plan.

Score	Energy rating	Current	Potential
92+	A		
81-91	B	83 B	83 B
69-80	C		
55-68	D		
39-54	E		
21-38	F		
1-20	G		

London branches open six days a week Mon - Sat

Canary Wharf | City | Colindale | Dartmouth Park | Ealing | Fulham
Hammersmith | Hampstead | Highgate | Hyde Park | Kensington | Kew
Knightsbridge | Nine Elms | Shoreditch | Southall | Surrey Quays
Wapping | Wembley | White City | Woolwich

International offices

China | Hong Kong SAR | India | Israel | Malaysia | Middle East | Pakistan
Qatar | Singapore | South Africa | Thailand | Turkey

