



Benham&Reeves

Parr's Way, Hammermsith, W6

£1,269 per week, £5,499 per month + fees

 3 Bedrooms  3 Bathrooms 
Furnished/UnFurnished

A sophisticated 4th floor apartment situated in an exclusive Riverside development, boasting a host of luxury facilities, close to the amenities of Hammersmith. The property is ideally located within walking distance from Hammersmith Tube station (Circle, District, Piccadilly, and Hammersmith & City lines).

Please [click here](#) for full detail

Property features

3 Bedrooms | 3 Bathrooms | Reception | Unfurnished | Fitted Kitchen | EPC-C | Close to Amenities | 24 hr Security and Concierge service | Nearby Hammersmith Tube Station

For more information about this property,
please call our Hammersmith branch on

020 8600 0960

Redress & Client Money Protection :

Benham and Reeves are members of The Property Ombudsman redress scheme and have Client Money protection with ARLA Propertymark. You can find more information on our website at <https://www.benhamandreeves.com/membership/>



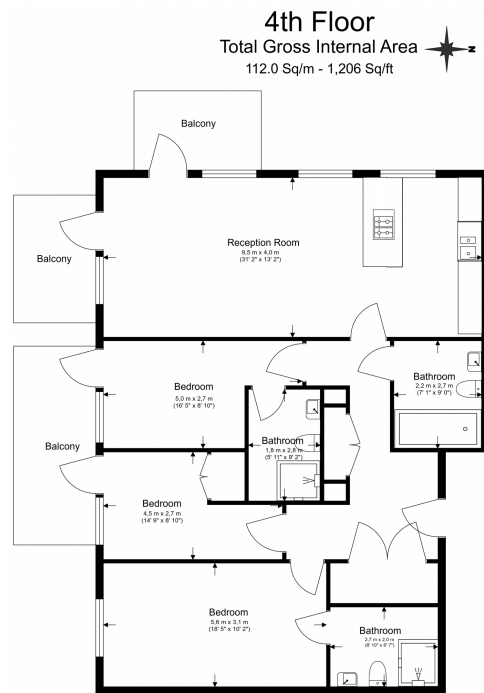
Benham & Reeves



Parr's Way, Hammermsith, W6

£1,269 per week, £5,499 per month + fees

www.benhams.com



Floor Plan measurements are approximate and are for illustrative purposes only. While we do not doubt the floor plans accuracy, we make no guarantee, warranty or representation as to the accuracy and completeness of the floor plan.

London branches open six days a week Mon - Sat

Canary Wharf | City | Colindale | Dartmouth Park | Ealing | Fulham
Hammersmith | Hampstead | Highgate | Hyde Park | Kensington | Kew
Knightsbridge | Nine Elms | Shoreditch | Southall | Surrey Quays
Wapping | Wembley | White City | Woolwich

International offices

China | Hong Kong SAR | India | Israel | Malaysia | Middle East | Pakistan
Qatar | Singapore | South Africa | Thailand | Turkey



Benham & Reeves