



Benham & Reeves

Hornsey Lane, Highgate, N6

£750 per week, £3,250 per month + fees

 3 Bedrooms  2 Bathrooms  Unfurnished

A beautiful large duplex apartment situated in a handsome Victorian building in N6 well located for Parkland Walk, Queens Wood, Highgate Wood, and Archway Underground Station (Northern Line).

Please [click here](#) for full detail

Property features

3 Bedrooms | Reception Room | Kitchen / Breakfast Room | Family Bathroom | Guest WC | EPC-D | Separate Shower Room | Off Street Parking | Front and Rear Private Gardens | Archway Underground Station

For more information about this property, please call our Highgate branch on

020 8341 2335



Redress & Client Money Protection :
Benham and Reeves are members of The Property Ombudsman redress scheme and have Client Money protection with ARLA Propertymark.
You can find more information on our website at <https://www.benhams.com/membership/>

Benham & Reeves



Hornsey Lane, Highgate, N6

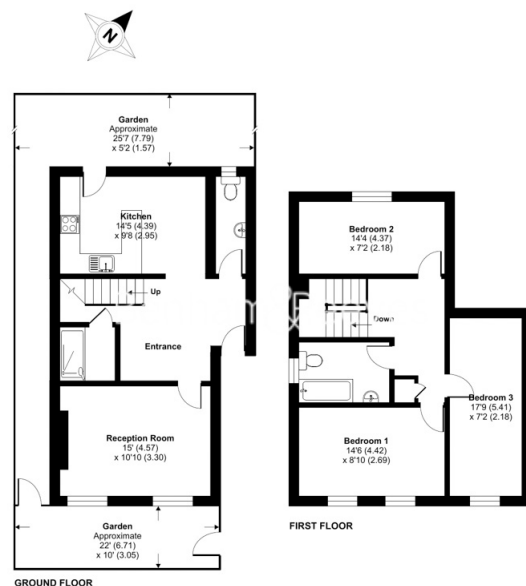
£750 per week, £3,250 per month + fees

www.benhams.com

Hornsey Lane, London, N6

Approximate Area = 1094 sq ft / 101.6 sq m

For identification only - Not to scale



Floor plan produced in accordance with RICS Property Measurement Standards incorporating International Property Measurement Standards (IPMS) Residential. © richmond 2022. Produced for Benham & Reeves. REF: 1068443

London branches open six days a week Mon - Sat

Canary Wharf | City | Colindale | Dartmouth Park | Ealing | Fulham
Hammersmith | Hampstead | Highgate | Hyde Park | Kensington | Kew
Knightsbridge | Nine Elms | Shoreditch | Southall | Surrey Quays
Wapping | Wembley | White City | Woolwich

International offices

China | Hong Kong SAR | India | Israel | Malaysia | Middle East | Pakistan
Qatar | Singapore | South Africa | Thailand | Turkey



Benham & Reeves