



Benham & Reeves

Queensland Road, Highgate, N7

£635 per week, £2,750 per month + fees

 2 Bedrooms  1 Bathroom  Furnished

An immaculately presented apartment set on the sixth floor of Gillespie Court situated in Queensland Terrace, a striking residential development of three distinctive towers adjacent to Arsenal's world famous Emirates Stadium. Including a secured allocated parking space for one car.

Please [click here](#) for full detail

Property features

Two double bedrooms | luxury bathroom | Open plan kitchen/reception room | Wood floors throughout | Fully fitted modern kitchen | EPC-B | Secured allocated parking for one car | Gym | Next to arsenal stadium | Close to transport and amenities

For more information about this property, please call our Highgate branch on

020 8341 2335

Redress & Client Money Protection :

Benham and Reeves are members of The Property Ombudsman redress scheme and have Client Money protection with ARLA Propertymark. You can find more information on our website at <https://www.benhams.com/membership/>



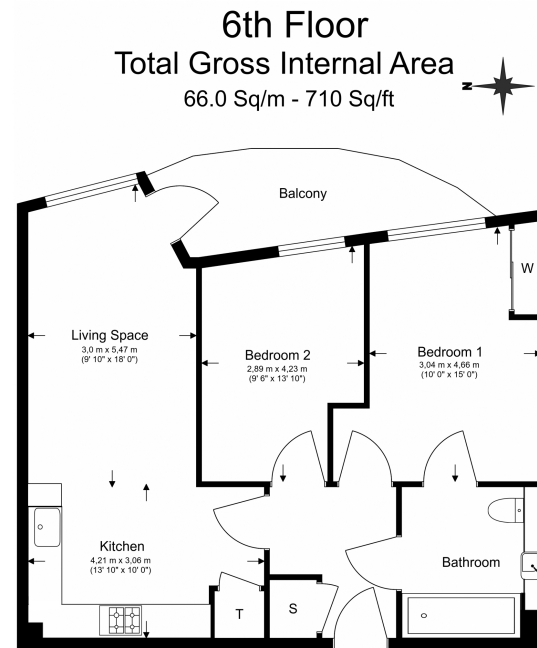
Benham & Reeves



Queensland Road, Highgate, N7

£635 per week, £2,750 per month + fees

www.benhams.com



Floor Plan measurements are approximate and are for illustrative purposes only. While we do not doubt the floor plans accuracy, we make no guarantee, warranty or representation as to the accuracy and completeness of the floor plan.

London branches open six days a week Mon - Sat

Canary Wharf | City | Colindale | Dartmouth Park | Ealing | Fulham
Hammersmith | Hampstead | Highgate | Hyde Park | Kensington | Kew
Knightsbridge | Nine Elms | Shoreditch | Southall | Surrey Quays
Wapping | Wembley | White City | Woolwich

International offices

China | Hong Kong SAR | India | Indonesia | Qatar | Malaysia | Middle East | Pakistan
Singapore | South Africa | Thailand | Turkey



Benham & Reeves