



Benham & Reeves

**Mary Neuner Road, Highgate, N8**

£414 per week, £1,795 per month + fees

🛏️ 1 Bedroom    🚿 1 Bathroom    🛋️ Furnished

Designer furnished, 10th floor Manhattan style apartment, with views of Alexandra Palace situated an exciting development, with free use of the residents GYM and HEATED SWIMMING POOL, within walking distance from Hornsey Station.

Please [click here](#) for full detail

## Property features

**Manhattan Style Apartment | Furnished To Very High Standard | One Bedroom | Fully Fitted Modern Kitchen | Private Balcony | EPC-B | 24/7 Concierge | Gym And Heated Swimming Pool For Residents Only | Close To Transport And Amenities | Close To Tube Stations**

For more information about this property,  
please call our Highgate branch on

**020 8341 2335**

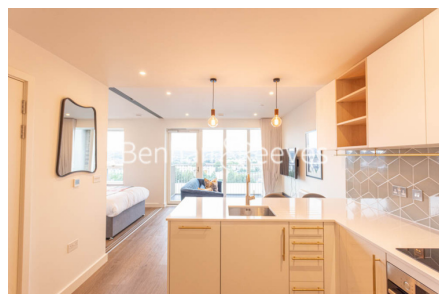
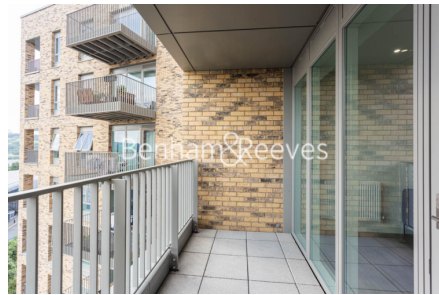
Redress & Client Money Protection :

Benham and Reeves are members of The Property Ombudsman redress scheme and have Client Money protection with ARLA Propertymark. You can find more information on our website at <https://www.benhamandreeves.com/membership/>



Benham & Reeves





# Mary Neuner Road, Highgate, N8

£414 per week, £1,795 per month + fees

[www.benhams.com](http://www.benhams.com)

Score	Energy rating	Current	Potential
92+	A		
81-91	B	85   B	85   B
69-80	C		
55-68	D		
39-54	E		
21-38	F		
1-20	G		

## London branches open six days a week Mon - Sat

Canary Wharf | City | Colindale | Dartmouth Park | Ealing | Fulham  
Hammersmith | Hampstead | Highgate | Hyde Park | Kensington | Kew  
Knightsbridge | Nine Elms | Shoreditch | Southall | Surrey Quays  
Wapping | Wembley | White City | Woolwich

## International offices

China | Hong Kong SAR | India | Indonesia | Qatar | Malaysia | Middle East |  
Singapore | South Africa | Thailand | Turkey

