



Benham & Reeves

## **Southmere House, Highland Street, E15**

£347 per week, £1,504 per month + fees

 1 Bedroom    1 Bathroom    Furnished

Modern luxury 5th floor apartment, with residents' only gym, situated with a highly sought-after development in Stratford - located minutes from Westfield and The Olympic Park. Good access to the Underground and Stratford International terminal.

Please [click here](#) for full detail

## Property features

**Large Double Bedroom | Spacious Reception | Modern Apartment | Fitted Kitchen | Private Balcony | EPC-B | New well-equipped Gym | Concierge Services | River Views | Direct trains to Canary Wharf**

For more information about this property,  
please call our Canary Wharf branch on

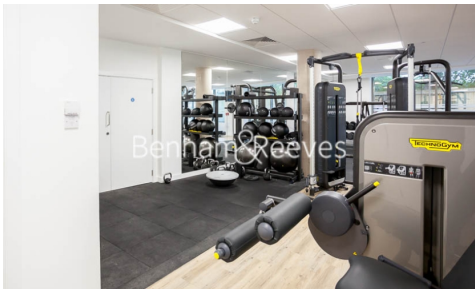
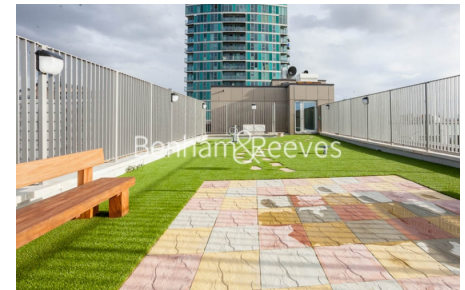
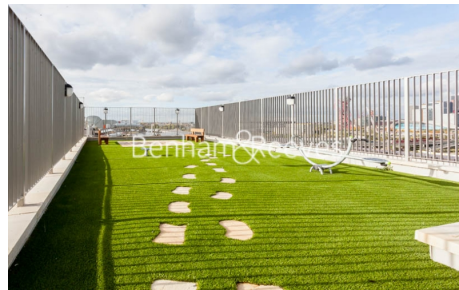
**020 8036 3200**



Redress & Client Money Protection :

Benham and Reeves are members of The Property Ombudsman redress scheme and have Client Money protection with ARLA Propertymark. You can find more information on our website at <https://www.benhams.com/membership/>

Benham & Reeves

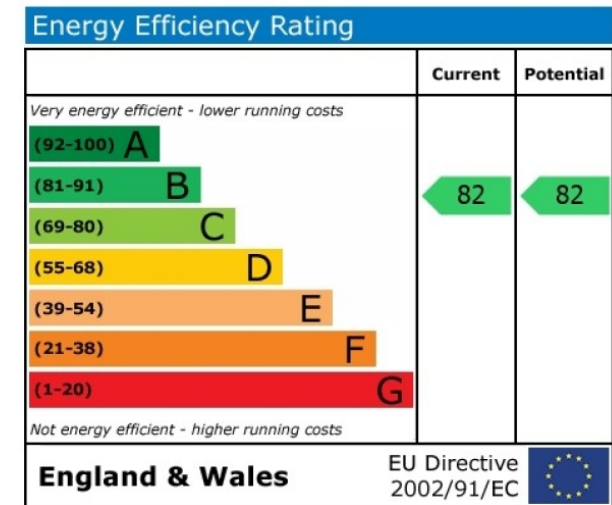
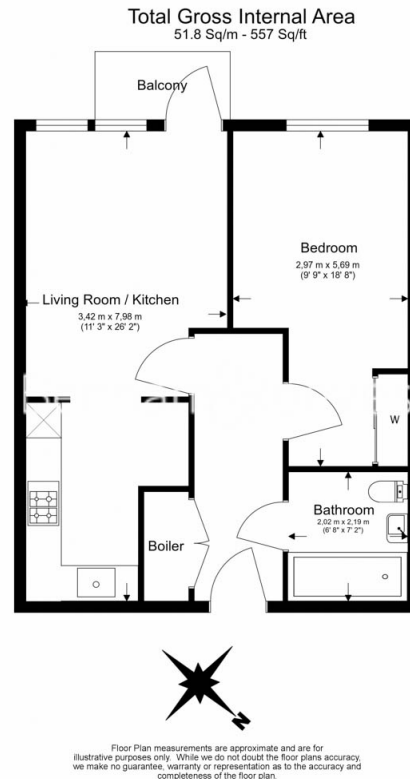




# Southmere House, Highland Street, E15

£347 per week, £1,504 per month + fees

www.benhams.com



## London branches open six days a week Mon - Sat

Canary Wharf | City | Colindale | Dartmouth Park | Ealing | Fulham  
Hammersmith | Hampstead | Highgate | Hyde Park | Kensington | Kew  
Knightsbridge | Nine Elms | Shoreditch | Southall | Surrey Quays  
Wapping | Wembley | White City | Woolwich

## International offices

China | Hong Kong SAR | India | Indonesia | Qatar | Malaysia | Middle East | Pakistan  
Singapore | South Africa | Thailand | Turkey



Benham & Reeves