



Benham&Reeves

Highbury Gardens, Holloway Road, N7

£650 per week, £2,817 per month + fees

 2 Bedrooms  2 Bathrooms  Furnished

Beautiful, recently refurbished and interior designed apartment offered furnished, situated in a hugely popular gated development in N7, within walking distance from Highbury /Islington tube station.

Please [click here](#) for full detail

Property features

Two double bedrooms | Two bathrooms | Fully fitted modern kitchen | Open plan reception room | Lift | EPC-C | Communal garden | Secured gated development | Close to public transport and local amenities | Nearby Highbury & Islington Station

For more information about this property,
please call our Highgate branch on

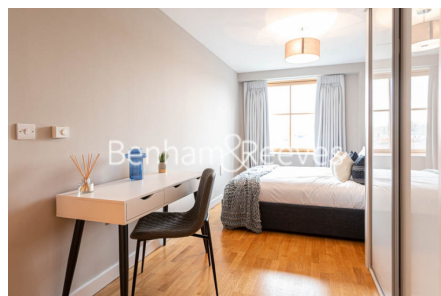
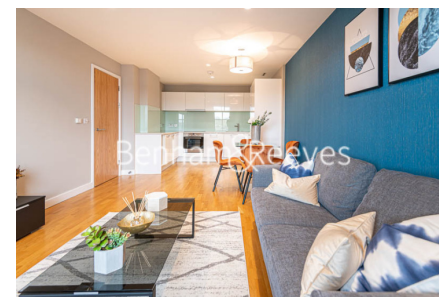
020 8341 2335

Redress & Client Money Protection :

Benham and Reeves are members of The Property Ombudsman redress scheme and have Client Money protection with ARLA Propertymark. You can find more information on our website at <https://www.benhamandreeves.com/membership/>



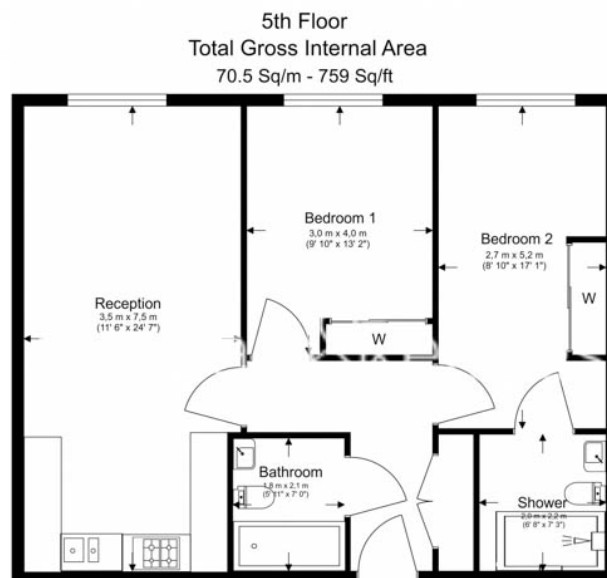
Benham&Reeves



Highbury Gardens, Holloway Road, N7

£650 per week, £2,817 per month + fees

www.benhams.com



Floor Plan measurements are approximate and are for illustrative purposes only. While we do not doubt the floor plans accuracy, we make no guarantee, warranty or representation as to the accuracy and completeness of the floor plan.

Score	Energy rating	Current	Potential
92+	A		
81-91	B		81 B
69-80	C	80 C	
55-68	D		
39-54	E		
21-38	F		
1-20	G		

London branches open six days a week Mon - Sat

Canary Wharf | City | Colindale | Dartmouth Park | Ealing | Fulham
Hammersmith | Hampstead | Highgate | Hyde Park | Kensington | Kew
Knightsbridge | Nine Elms | Shoreditch | Southall | Surrey Quays
Wapping | Wembley | White City | Woolwich

International offices

China | Hong Kong SAR | India | Indonesia | Qatar | Malaysia | Middle East |
Singapore | South Africa | Thailand | Turkey



Benham & Reeves