



Benham & Reeves

Station Road, Hounslow TW3

£691 per week, £2,994 per month + fees

🛏️ 4 Bedrooms 🚿 2 Bathrooms 🛋️ Unfurnished

A newly renovated family home featuring four bedrooms, a reception room, kitchen, two bathrooms and a patio garden. The A4/M4 provides excellent routes into Central London and easy access to Heathrow Airport.

Please [click here](#) for full detail

Property features

4 Bedrooms | 2 Bathrooms | Newly renovated | Patio garden | Located on a quiet residential street | EPC-D | Close to local amenities | Modern kitchen | Close to Hounslow rail station

For more information about this property,
please call our Kew branch on

020 8326 1960

Redress & Client Money Protection :
Benham and Reeves are members of The Property Ombudsman redress scheme and have Client Money protection with ARLA Propertymark.
You can find more information on our website at <https://www.benhamandreeves.com/membership/>



Benham&Reeves

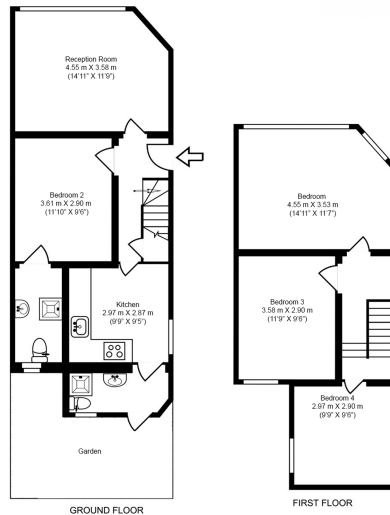


Station Road, Hounslow TW3

£691 per week, £2,994 per month + fees

www.benhams.com

Total Gross Internal Area
93.9 Sq/m - 1,003 Sq/ft



Benham & Reeves

Floor Plan measurements are approximate and are for illustrative purposes only. While we do not doubt the floor plans accuracy, we make no guarantee, warranty or representation as to the accuracy and completeness of the floor plan.

Score	Energy rating	Current	Potential
92+	A		
81-91	B		84 B
69-80	C		
55-68	D	61 D	
39-54	E		
21-38	F		
1-20	G		

London branches open six days a week Mon - Sat

Canary Wharf | City | Colindale | Dartmouth Park | Ealing | Fulham
Hammersmith | Hampstead | Highgate | Hyde Park | Kensington | Kew
Knightsbridge | Nine Elms | Shoreditch | Southall | Surrey Quays
Wapping | Wembley | White City | Woolwich

International offices

China | Hong Kong SAR | India | Indonesia | Qatar | Malaysia | Middle East | Pakistan
Singapore | South Africa | Thailand | Turkey



Benham & Reeves