



Benham & Reeves

Habito, Hounslow, TW3

£404 per week, £1,751 per month + fees

🛏️ 2 Bedrooms 🚿 1 Bathroom 🛋️ Unfurnished

Spacious 4th floor apartment situated in a boutique development in the heart of Hounslow, TW3. Just a few minutes from Hounslow Central underground (Piccadilly Line) which offers access to both the West End and Heathrow.

Please [click here](#) for full detail

Property features

Entral Location | One Bathroom | Wood Floors | Central Heating | Private Balcony | EPC-B | Communal Gardens | Local Amenities | Lift Access | Hounslow Central

For more information about this property,
please call our Kew branch on

020 8326 1960



Redress & Client Money Protection :
Benham and Reeves are members of The Property Ombudsman redress scheme and have Client Money protection with ARLA Propertymark.
You can find more information on our website at <https://www.benhamandreeves.com/membership/>

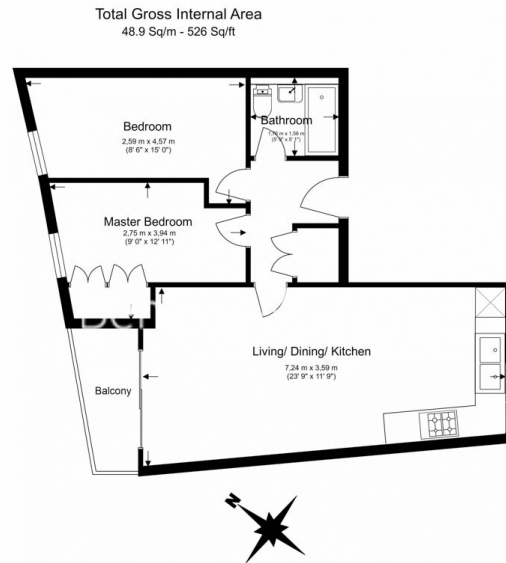
Benham & Reeves



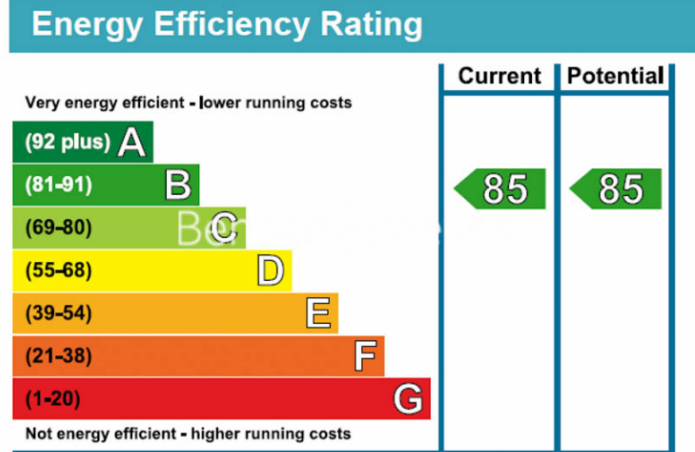
Habito, Hounslow, TW3

£404 per week, £1,751 per month + fees

www.benhams.com



Floor Plan measurements are approximate and are for illustrative purposes only. While we do not doubt the floor plans accuracy, we make no guarantee, warranty or representation as to the accuracy and completeness of the floor plan.



London branches open six days a week Mon - Sat

Canary Wharf | City | Colindale | Dartmouth Park | Ealing | Fulham
Hammersmith | Hampstead | Highgate | Hyde Park | Kensington | Kew
Knightsbridge | Nine Elms | Shoreditch | Southall | Surrey Quays
Wapping | Wembley | White City | Woolwich

International offices

China | Hong Kong SAR | India | Israel | Malaysia | Middle East | Pakistan
Qatar | Singapore | South Africa | Thailand | Turkey



Benham & Reeves