



Benham & Reeves

High Street Quarter, Hounslow, TW3

£381 per week, £1,651 per month + fees

 1 Bedroom  1 Bathroom  Furnished

Stylish apartment situated in a modern development just a few minutes from Hounslow High Street and Hounslow West underground station (Piccadilly Line) which offers access to both the West End and Heathrow.

Please [click here](#) for full detail

Property features

High Street Quarter | Modern Aspect | Wood Floors | Underfloor Heating | Private Balcony | EPC-B | Communal Gardens | Bicycle Storage | Lift Access | Hounslow High Street

For more information about this property,
please call our Kew branch on

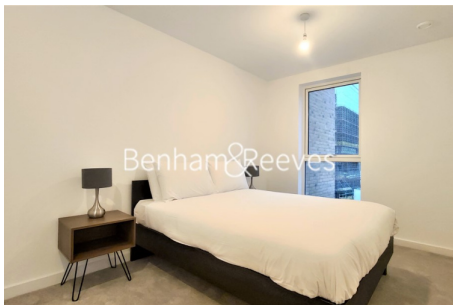
020 8326 1960

Redress & Client Money Protection :

Benham and Reeves are members of The Property Ombudsman redress scheme and have Client Money protection with ARLA Propertymark. You can find more information on our website at <https://www.benhamandreeves.com/membership/>



Benham & Reeves



High Street Quarter, Hounslow, TW3

£381 per week, £1,651 per month + fees

www.benhams.com



Floor Plan measurements are approximate and are for illustrative purposes only. While we do not doubt the floor plans accuracy we make no guarantee, warranty or representation as to the accuracy and completeness of the floor plan.

Score	Energy rating	Current	Potential
92+	A		
81-91	B	84 B	84 B
69-80	C		
55-68	D		
39-54	E		
21-38	F		
1-20	G		

London branches open six days a week Mon - Sat

Canary Wharf | City | Colindale | Dartmouth Park | Ealing | Fulham
Hammersmith | Hampstead | Highgate | Hyde Park | Kensington | Kew
Knightsbridge | Nine Elms | Shoreditch | Southall | Surrey Quays
Wapping | Wembley | White City | Woolwich

International offices

China | Hong Kong SAR | India | Indonesia | Qatar | Malaysia | Middle East | Pakistan
Singapore | South Africa | Thailand | Turkey



Benham & Reeves