



Benham & Reeves

Habito, Hounslow, TW3

£462 per week, £2,000 per month + fees

🛏️ 2 Bedrooms 🚿 2 Bathrooms 🛋️ Unfurnished

Spacious apartment situated within a boutique development in the heart of Hounslow, TW3. Just a few minutes from Hounslow Central underground (Piccadilly Line) which offers access to both the West End and Heathrow.

Please [click here](#) for full detail

Property features

Central location | Modern aspect | Wood floors | Central heating | Private balcony | EPC-B | Communal gardens | Local amenities | Lift access | Hounslow central

For more information about this property,
please call our Kew branch on

020 8326 1960

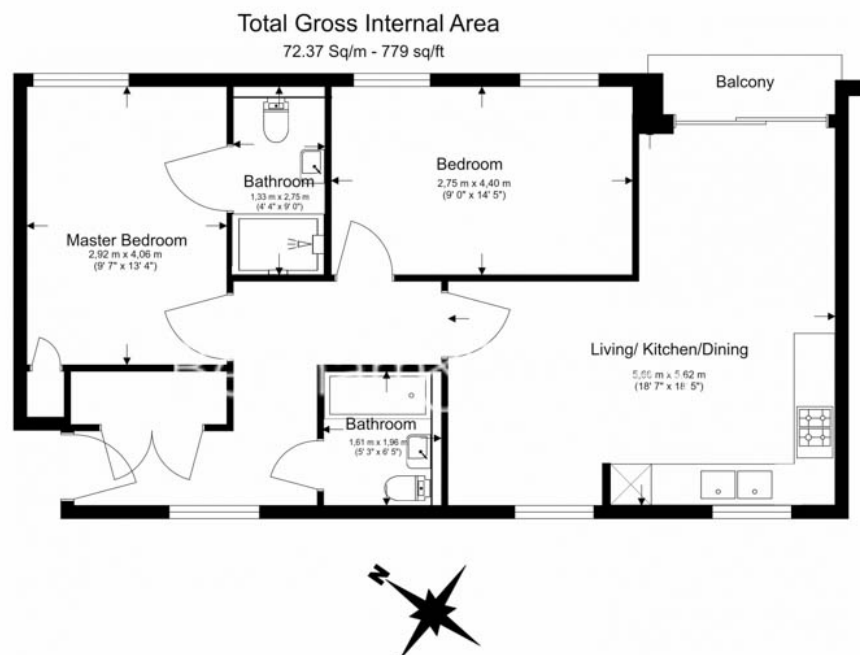




Habito, Hounslow, TW3

£462 per week, £2,000 per month + fees

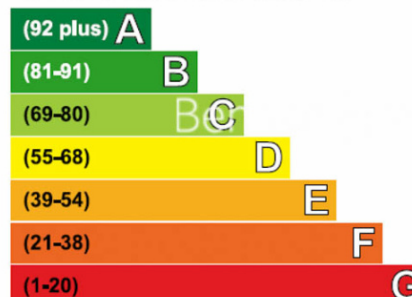
www.benhams.com



Floor Plan measurements are approximate and are for illustrative purposes only. While we do not doubt the floor plans accuracy, we make no guarantee, warranty or representation as to the accuracy and completeness of the floor plan.

Energy Efficiency Rating

Very energy efficient - lower running costs



Not energy efficient - higher running costs

Current	Potential
85	85

London branches open six days a week Mon - Sat

Canary Wharf | City | Colindale | Dartmouth Park | Ealing | Fulham
Hammersmith | Hampstead | Highgate | Hyde Park | Kensington | Kew
Knightsbridge | Nine Elms | Shoreditch | Southall | Surrey Quays
Wapping | Wembley | White City | Woolwich

International offices

China | Hong Kong SAR | India | Indonesia | Qatar | Malaysia | Middle East | Pakistan
Singapore | South Africa | Thailand | Turkey



Benham & Reeves