



Benham & Reeves

Habito, Hounslow, TW3

£358 per week, £1,550 per month + fees

 1 Bedroom  1 Bathroom  Unfurnished

Stylish 2nd floor apartment situated in a boutique development in the heart of Hounslow, TW3. Ideally located a few minutes from Hounslow Central Underground (Piccadilly Line) which offers access to both the West End and Heathrow.

Please [click here](#) for full detail

Property features

Unfurnished | Modern Aspect | Wood floors | Central heating | Private balcony | EPC-B | Communal gardens | Local amenities | Lift access | Hounslow central

For more information about this property,
please call our Kew branch on

020 8326 1960



Redress & Client Money Protection :
Benham and Reeves are members of The Property Ombudsman redress scheme and have Client Money protection with ARLA Propertymark.
You can find more information on our website at <https://www.benhams.com/membership/>

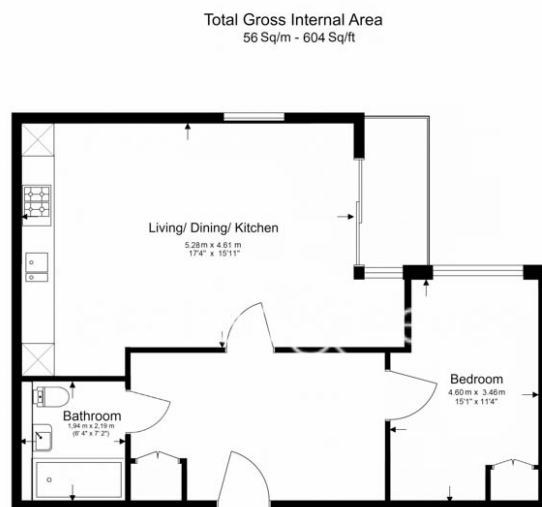
Benham & Reeves



Habito, Hounslow, TW3

£358 per week, £1,550 per month + fees

www.benhams.com



Floor Plan measurements are approximate and are for illustrative purposes only. While we do not doubt the floor plans accuracy,

| Score | Energy rating | Current | Potential |
|-------|---------------|---------|-----------|
| 92+ | A | | |
| 81-91 | B | 86 B | 86 B |
| 69-80 | C | | |
| 55-68 | D | | |
| 39-54 | E | | |
| 21-38 | F | | |
| 1-20 | G | | |

London branches open six days a week Mon - Sat

Canary Wharf | City | Colindale | Dartmouth Park | Ealing | Fulham
Hammersmith | Hampstead | Highgate | Hyde Park | Kensington | Kew
Knightsbridge | Nine Elms | Shoreditch | Southall | Surrey Quays
Wapping | Wembley | White City | Woolwich

International offices

China | Hong Kong SAR | India | Indonesia | Qatar | Malaysia | Middle East | Pakistan
Singapore | South Africa | Thailand | Turkey



Benham & Reeves