



Benham & Reeves

**Habito, Hounslow, TW3**

£462 per week, £2,000 per month + fees

 2 Bedrooms    2 Bathrooms    Unfurnished

Dual aspect spacious apartment set in a popular boutique development in the heart of Hounslow, TW3. Just a few minutes from Hounslow Central underground (Piccadilly Line) which offers access to both the West End and Heathrow.

Please [click here](#) for full detail

## Property features

**Two private balconies | Modern aspect | Wood floors | Central heating | Double Storage | EPC-B | Communal gardens | Local amenities | Lift access | Nearby Hounslow central**

For more information about this property,  
please call our Kew branch on

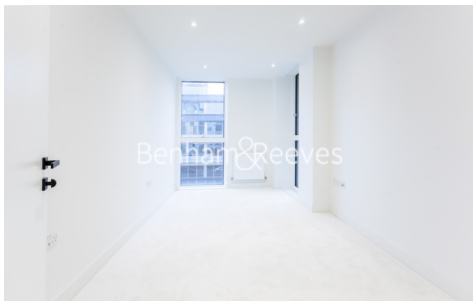
**020 8326 1960**

Redress & Client Money Protection :

Benham and Reeves are members of The Property Ombudsman redress scheme and have Client Money protection with ARLA Propertymark. You can find more information on our website at <https://www.benhamandreeves.com/membership/>



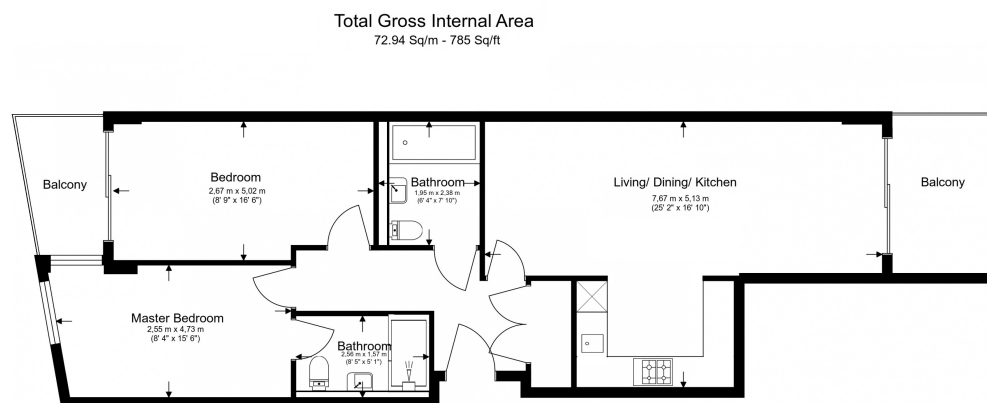
**Benham & Reeves**



# Habito, Hounslow, TW3

£462 per week, £2,000 per month + fees

www.benhams.com



Floor Plan measurements are approximate and are for illustrative purposes only. While we do not doubt the floor plans accuracy, we make no guarantee, warranty or representation as to the accuracy and completeness of the floor plan.

Score	Energy rating	Current	Potential
92+	A		
81-91	B	84   B	84   B
69-80	C		
55-68	D		
39-54	E		
21-38	F		
1-20	G		

Activate  
Go to Setti

## London branches open six days a week Mon - Sat

Canary Wharf | City | Colindale | Dartmouth Park | Ealing | Fulham  
Hammersmith | Hampstead | Highgate | Hyde Park | Kensington | Kew  
Knightsbridge | Nine Elms | Shoreditch | Southall | Surrey Quays  
Wapping | Wembley | White City | Woolwich

## International offices

China | Hong Kong SAR | India | Indonesia | Qatar | Malaysia | Middle East | Pakistan  
Singapore | South Africa | Thailand | Turkey



Benham & Reeves