



Benham & Reeves

Battersea Reach, Imperial Wharf, SW11

£485 per week, £2,100 per month + fees

🛏 1 Bedroom 🚿 1 Bathroom 🛋 Furnished

A luxury 5th floor apartment situated in a landmark Riverside development, with lifts to all floors, and wonderful River views. Clapham Junction is a within a short walk.

Please [click here](#) for full detail

Property features

1 Bedroom | 1 Bathroom | Wooden Flooring | Intergrated Appliances | Furnished | EPC-B | Huge Storage Space | 24 Hour Concierge | River View | Nearby Victoria Station

For more information about this property, please call our Fulham branch on

020 7348 7620

Redress & Client Money Protection :

Benham and Reeves are members of The Property Ombudsman redress scheme and have Client Money protection with ARLA Propertymark. You can find more information on our website at <https://www.benhams.com/membership/>



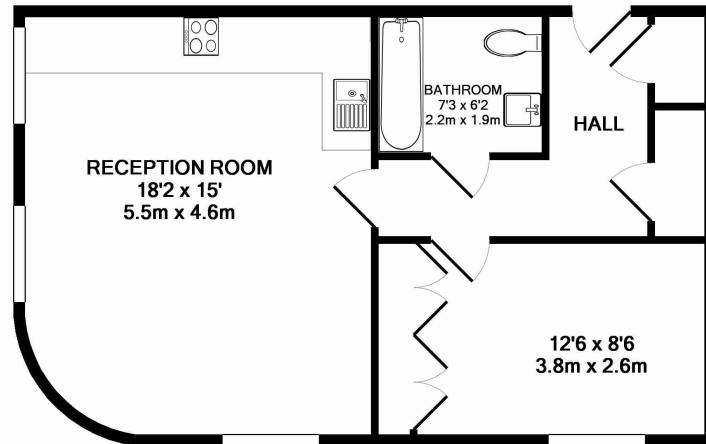
Benham & Reeves



Battersea Reach, Imperial Wharf, SW11

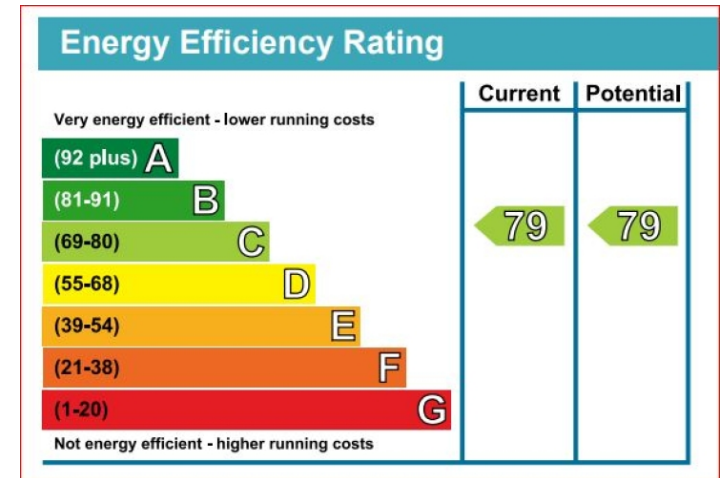
£485 per week, £2,100 per month + fees

www.benhams.com



505 SE AP, SW11 - 5TH FLOOR
TOTAL APPROX. FLOOR AREA 523 SQ.FT. (48.6 SQ.M.)

Whilst every attempt has been made to ensure the accuracy of the floor plan contained here, measurements of doors, windows, rooms and any other items are approximate and no responsibility is taken for any error, omission, or mis-statement. This plan is for illustrative purposes only and should be used as such by any prospective purchaser. The services, systems and appliances shown have not been tested and no guarantee as to their operability or efficiency can be given
Made with Metropix ©2015



London branches open six days a week Mon - Sat

Canary Wharf | City | Colindale | Dartmouth Park | Ealing | Fulham
Hammersmith | Hampstead | Highgate | Hyde Park | Kensington | Kew
Knightsbridge | Nine Elms | Shoreditch | Southall | Surrey Quays
Wapping | Wembley | White City | Woolwich

International offices

China | Hong Kong SAR | India | Indonesia | Qatar | Malaysia | Middle East |
Singapore | South Africa | Thailand | Turkey



Benham & Reeves