



Benham & Reeves

Battersea Bridge Road, Imperial Wharf, SW11

£912 per week, £3,952 per month + fees

 3 Bedrooms  2 Bathrooms  Unfurnished

A tastefully presented apartment on Battersea, benefitting from spacious rooms, a large dining room, two balconies and an allocated parking bay.

Please [click here](#) for full detail

Property features

3 bedroom | 2 bathroom | Allocated parking space | Unfurnished | Large living room | EPC-C | A fully equipped kitchen with a large island | 2 balconies | Spacious rooms | Battersea Park and Clapham Junction

For more information about this property,
please call our Fulham branch on

020 7348 7620



Redress & Client Money Protection :
Benham and Reeves are members of The Property Ombudsman redress scheme and have Client Money protection with ARLA Propertymark.
You can find more information on our website at <https://www.benhams.com/membership/>

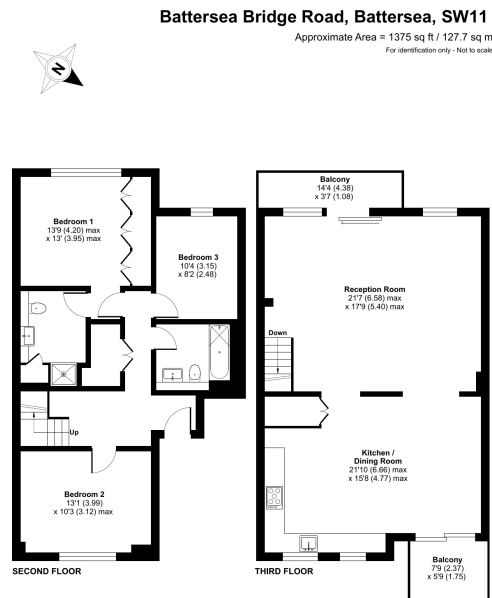
Benham & Reeves



Battersea Bridge Road, Imperial Wharf, SW11

£912 per week, £3,952 per month + fees

www.benhams.com



RICS Certified Property Measurement Floor plan produced in accordance with RICS Property Measurement Standards incorporating International Property Measurement Standards (IPMS) Residential. © Benham & Reeves REF: 1118054

Score	Energy rating	Current	Potential
92+	A		
81-91	B		
69-80	C	76 C	80 C
55-68	D		
39-54	E		
21-38	F		
1-20	G		

London branches open six days a week Mon - Sat

Canary Wharf | City | Colindale | Dartmouth Park | Ealing | Fulham
Hammersmith | Hampstead | Highgate | Hyde Park | Kensington | Kew
Knightsbridge | Nine Elms | Shoreditch | Southall | Surrey Quays
Wapping | Wembley | White City | Woolwich

International offices

China | Hong Kong SAR | India | Indonesia | Qatar | Malaysia | Middle East | Pakistan
Singapore | South Africa | Thailand | Turkey

