



Benham & Reeves

Courtyard House, Imperial Wharf SW6

£795 per week, £3,445 per month + fees

 3 Bedrooms  2 Bathrooms  Unfurnished

An expansive apartment with picture perfect River views and landscaped gardens, situated in an exclusive development a short walk from Imperial wharf station.

Please [click here](#) for full detail

Property features

3 Bedrooms | 2 Bathrooms | Reception | Unfurnished | Kitchen | EPC-B | Full height windows | Wood Floors | Nearby Imperial Wharf Tube Station

For more information about this property, please call our Fulham branch on

020 7348 7620

Redress & Client Money Protection :

Benham and Reeves are members of The Property Ombudsman redress scheme and have Client Money protection with ARLA Propertymark. You can find more information on our website at <https://www.benhams.com/membership/>



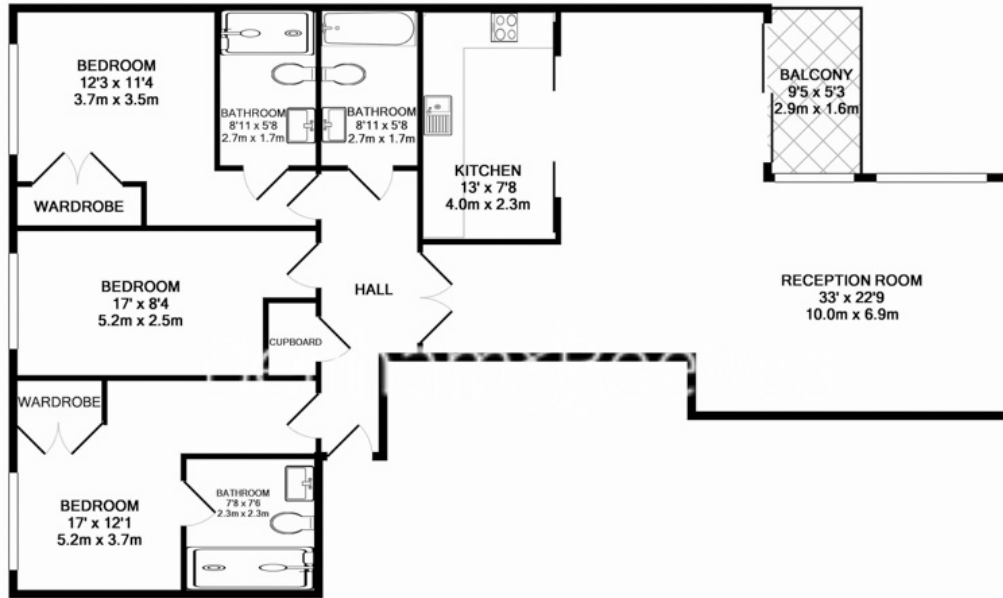
Benham & Reeves



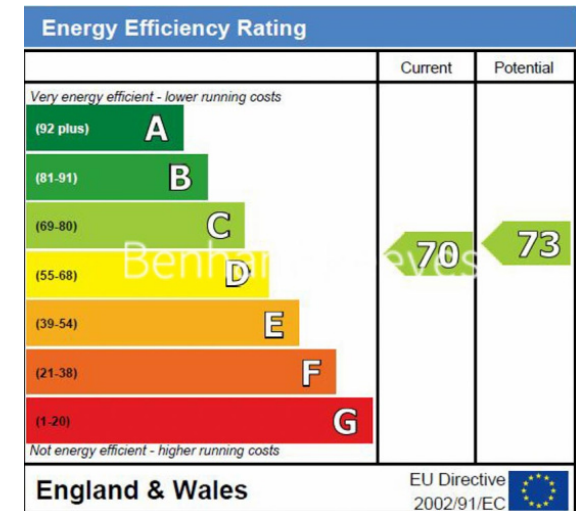
Courtyard House, Imperial Wharf SW6

£795 per week, £3,445 per month + fees

www.benhams.com



8CH-IW-SW6 - 4TH FLOOR
 TOTAL APPROX. FLOOR AREA 1257 SQ. FT. (116.7 SQ.M.)
 Whilst every attempt has been made to ensure the accuracy of the floor plan contained here, measurements of doors, windows, rooms and any other items are approximate and no responsibility is taken for any error, omission, or mis-statement. This plan is for illustrative purposes only and should be used as such by any prospective purchaser. The services, systems and appliances shown have not been tested and no guarantee as to their operability or efficiency can be given
 Made with Metropix ©2017



London branches open six days a week Mon - Sat

Canary Wharf | City | Colindale | Dartmouth Park | Ealing | Fulham
 Hammersmith | Hampstead | Highgate | Hyde Park | Kensington | Kew
 Knightsbridge | Nine Elms | Shoreditch | Southall | Surrey Quays
 Wapping | Wembley | White City | Woolwich

International offices

China | Hong Kong SAR | India | Indonesia | Qatar | Malaysia | Middle East |
 Singapore | South Africa | Thailand | Turkey



Benham & Reeves