



Benham & Reeves

Townmead Road, Imperial Wharf, SW6

£554 per week, £2,401 per month + fees

 1 Bedroom  1 Bathroom  Furnished

A stylish 6th floor apartment, with secure underground parking (available via separate negotiation) within a vibrant Riverside landmark development. Good transport connections bring the property within easy reach of the fashionable areas of Chelsea and King's Road.

Please [click here](#) for full detail

Property features

1 Bedroom | 1 Bathroom | Reception | Kitchen | Balcony | EPC-B | Underfloor Heating | Comfort Cooling | Nearby Imperial Wharf

For more information about this property,
please call our Fulham branch on

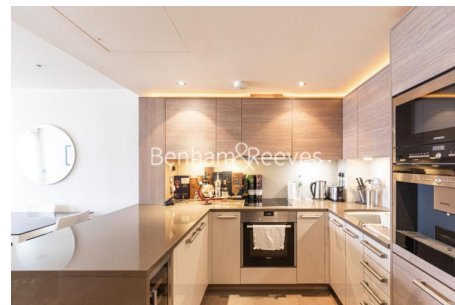
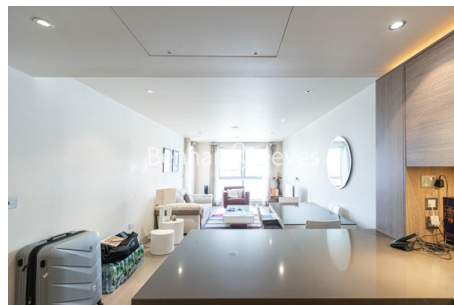
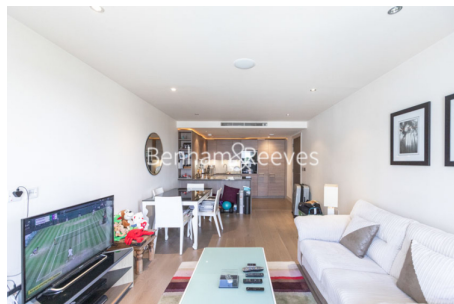
020 7348 7620

Redress & Client Money Protection :

Benham and Reeves are members of The Property Ombudsman redress scheme and have Client Money protection with ARLA Propertymark. You can find more information on our website at <https://www.benhamandreeves.com/membership/>



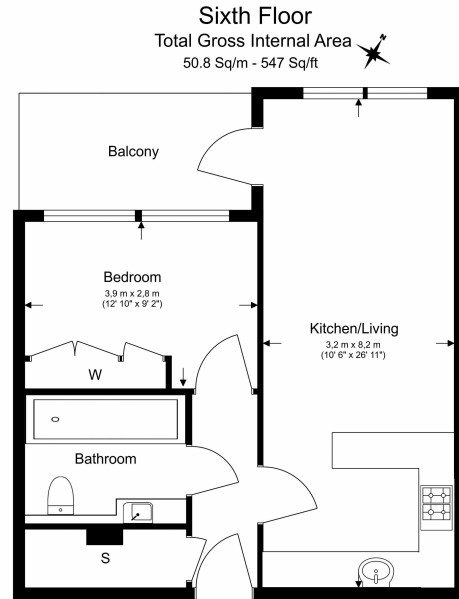
Benham & Reeves



Townmead Road, Imperial Wharf, SW6

£554 per week, £2,401 per month + fees

www.benhams.com



Floor Plan measurements are approximate and are for illustrative purposes only. While we do not doubt the floor plans accuracy, we make no guarantee, warranty or representation as to the accuracy and completeness of the floor plan.

Score	Energy rating	Current	Potential
92+	A		
81-91	B	84 B	85 B
69-80	C		
55-68	D		
39-54	E		
21-38	F		
1-20	G		

London branches open six days a week Mon - Sat

Canary Wharf | City | Colindale | Dartmouth Park | Ealing | Fulham
Hammersmith | Hampstead | Highgate | Hyde Park | Kensington | Kew
Knightsbridge | Nine Elms | Shoreditch | Southall | Surrey Quays
Wapping | Wembley | White City | Woolwich

International offices

China | Hong Kong SAR | India | Indonesia | Qatar | Malaysia | Middle East |
Singapore | South Africa | Thailand | Turkey



Benham & Reeves