



Benham & Reeves

Park Street, Imperial Wharf, SW6

£600 per week, £2,600 per month + fees

 Studio  1 Bathroom  Furnished

A contemporary Manhattan apartment set in a landmark riverside development close to the amenities of Fulham and Chelsea. The development is conveniently situated moments away from Imperial Wharf overground station.

Please [click here](#) for full detail

Property features

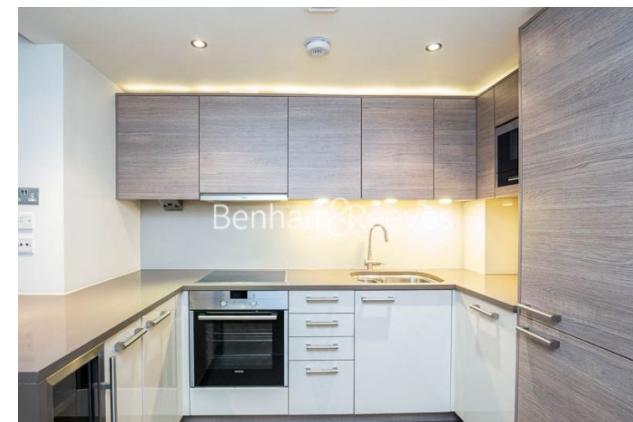
Approx. 500 Sq ft | Furnished | Manhattan Apartment | Chelsea Creek Development | 24/7 Concierge | EPC-C | Gym and swimming pool included | Comfort cooling and heating | Imperial Wharf Overground station

For more information about this property,
please call our Fulham branch on

020 7348 7620

Redress & Client Money Protection :

Benham and Reeves are members of The Property Ombudsman redress scheme and have Client Money protection with ARLA Propertymark. You can find more information on our website at <https://www.benhams.com/membership/>



Benham & Reeves



Park Street, Imperial Wharf, SW6

£600 per week, £2,600 per month + fees

www.benhams.com

Score	Energy rating	Current	Potential
92+	A		
81-91	B		
69-80	C	79 c	79 c
55-68	D		
39-54	E		
21-38	F		
1-20	G		

London branches open six days a week Mon - Sat

Canary Wharf | City | Colindale | Dartmouth Park | Ealing | Fulham
Hammersmith | Hampstead | Highgate | Hyde Park | Kensington | Kew
Knightsbridge | Nine Elms | Shoreditch | Southall | Surrey Quays
Wapping | Wembley | White City | Woolwich

International offices

China | Hong Kong SAR | India | Indonesia | Qatar | Malaysia | Middle East | Pakistan
Singapore | South Africa | Thailand | Turkey

