



Benham & Reeves

Townmead Road, Imperial Wharf, SW6

£635 per week, £2,750 per month + fees

 2 Bedrooms  1 Bathroom  Furnished

A tastefully presented recently refurbished apartment, with the option of underground parking, situated in a vibrant Riverside development close to the amenities of Fulham. Ideally located moments from Imperial Wharf Overground station.

Please [click here](#) for full detail

Property features

2 Bedrooms | 1 Bathroom | Integrated Kitchen | Open plan Kitchen dining room lounge | New flooring and carpets | EPC-C | Fully furnished | Comfort cooling | 24hour concierge | Imperial Wharf Overground Station

For more information about this property, please call our Fulham branch on

020 7348 7620

Redress & Client Money Protection :

Benham and Reeves are members of The Property Ombudsman redress scheme and have Client Money protection with ARLA Propertymark. You can find more information on our website at <https://www.benhamandreeves.com/membership/>



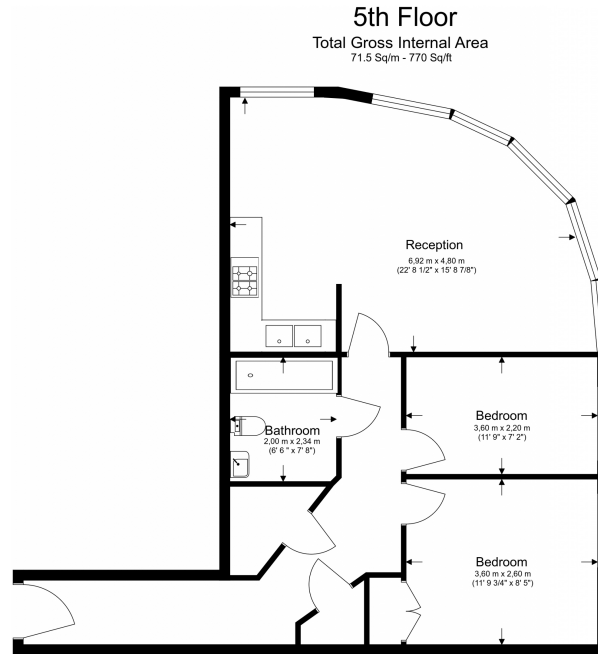
Benham & Reeves



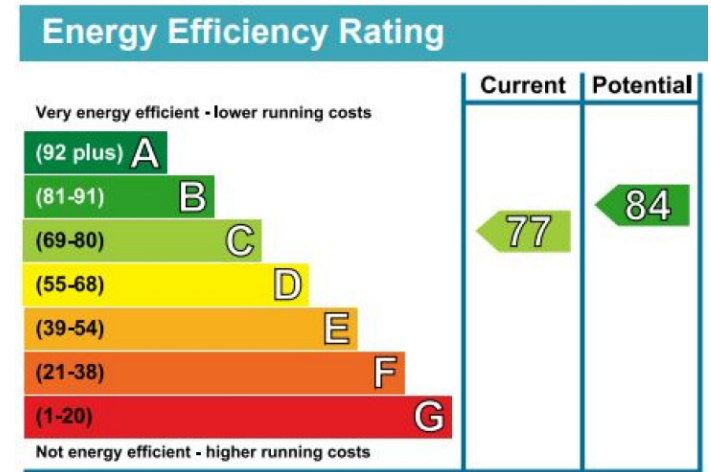
Townmead Road, Imperial Wharf, SW6

£635 per week, £2,750 per month + fees

www.benhams.com



Floor Plan measurements are approximate and are for illustrative purposes only. While we do not doubt the floor plans accuracy, we make no guarantee, warranty or representation as to the accuracy and completeness of the floor plan.



London branches open six days a week Mon - Sat

Canary Wharf | City | Colindale | Dartmouth Park | Ealing | Fulham
Hammersmith | Hampstead | Highgate | Hyde Park | Kensington | Kew
Knightsbridge | Nine Elms | Shoreditch | Southall | Surrey Quays
Wapping | Wembley | White City | Woolwich

International offices

China | Hong Kong SAR | India | Indonesia | Qatar | Malaysia | Middle East |
Singapore | South Africa | Thailand | Turkey



Benham & Reeves