



Benham & Reeves

Lockgate Road, Imperial Wharf, SW6

£924 per week, £4,004 per month + fees

 2 Bedrooms  2 Bathrooms  Furnished

Contemporarily furnished 2nd floor apartment situated within a popular development with excellent onsite amenities located on the fringes of Fulham and Chelsea. A short walk from Imperial Wharf Underground Station and less than a mile from Fulham Broadway Underground station (District Line).

Please [click here](#) for full detail

Property features

2 Double Bedroom Apartment with Built-in Wardrobe | Sizeable Open-Plan Reception with Dining Areas | Luxury Bathrooms | CCTV & Security / Lift Access / Video Entry | Wooden Flooring in the Reception & Hallway / Comfort Carpets | EPC-TBC | Gym and 24/7 concierge | 1 x Storage Room / Long Hallway / Double Glazing / Spotlight | 2 en-suites and a guest toilet | Few minutes' walk to Imperial Wharf station

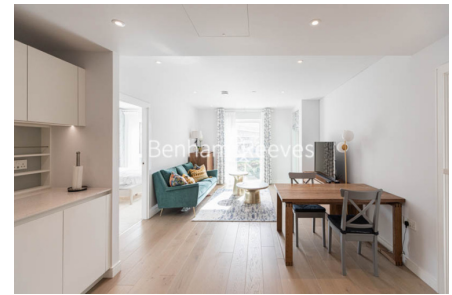
For more information about this property, please call our Fulham branch on

020 7348 7620

Redress & Client Money Protection :
Benham and Reeves are members of The Property Ombudsman redress scheme and have Client Money protection with ARLA Propertymark.
You can find more information on our website at <https://www.benhams.com/membership/>



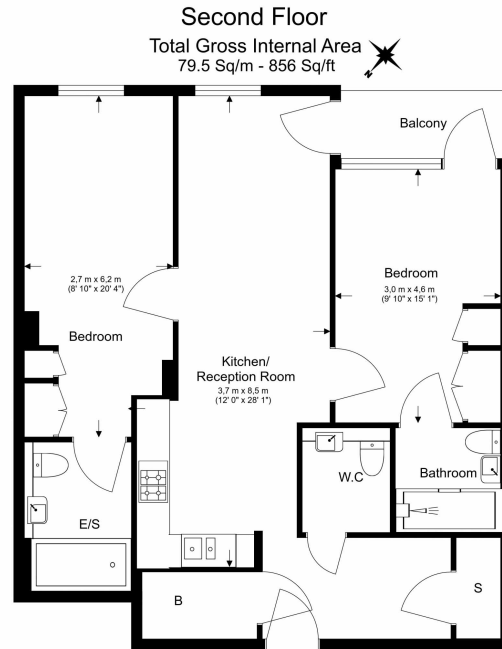
Benham & Reeves



Lockgate Road, Imperial Wharf, SW6

£924 per week, £4,004 per month + fees

www.benhams.com



Floor Plan measurements are approximate and are for illustrative purposes only. While we do not doubt the floor plans accuracy, we make no guarantee, warranty or representation as to the accuracy and completeness of the floor plan.

London branches open six days a week Mon - Sat

Canary Wharf | City | Colindale | Dartmouth Park | Ealing | Fulham
Hammersmith | Hampstead | Highgate | Hyde Park | Kensington | Kew
Knightsbridge | Nine Elms | Shoreditch | Southall | Surrey Quays
Wapping | Wembley | White City | Woolwich

International offices

China | Hong Kong SAR | India | Indonesia | Qatar | Malaysia | Middle East |
Singapore | South Africa | Thailand | Turkey



Benham & Reeves