



Benham & Reeves

Park Street, Imperial Wharf, SW6

£580 per week, £2,513 per month + fees

 Studio  1 Bathroom  Furnished

Fashionable Manhattan studio apartment with good facilities including a spa, lift acces. Located close to Imperial Wharf Overground Station and Fulham Broadway Tube Station (District Line).

Please [click here](#) for full detail

Property features

Manhattan studio apartment | Bathroom | Furnished | Private balcony | Modern kitchen | EPC-TBC | Close to Amenities | 24-hour concierge | Fulham Broadway Tube Station

For more information about this property,
please call our Fulham branch on

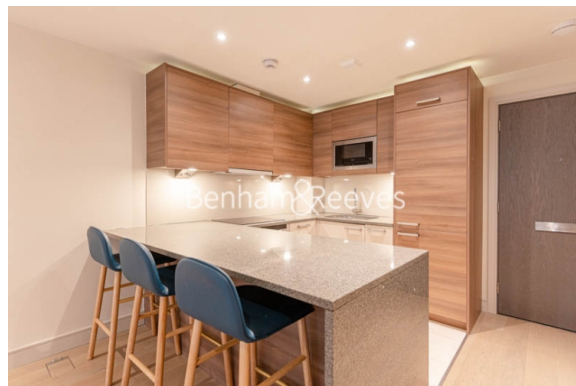
020 7348 7620

Redress & Client Money Protection :

Benham and Reeves are members of The Property Ombudsman redress scheme and have Client Money protection with ARLA Propertymark. You can find more information on our website at <https://www.benhamandreeves.com/membership/>



Benham & Reeves



Park Street, Imperial Wharf, SW6

£580 per week, £2,513 per month + fees

www.benhams.com

Compass House,
Chelsea Creek, SW6
Approximate Gross Internal Area
464 sq ft / 43.11 sq m

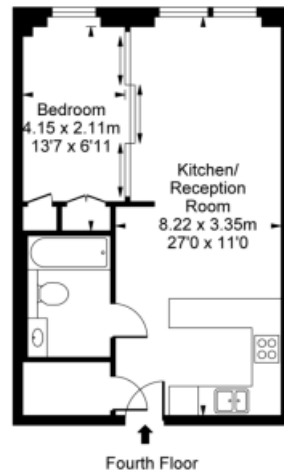


ILLUSTRATION FOR IDENTIFICATION PURPOSES ONLY
ALL MEASUREMENTS ARE MAXIMUM, AND INCLUDE WINDOW BAYS AND WARDROBES WHERE APPLICABLE
THIS PLAN MUST NOT BE REPRODUCED BY ANY OTHER PERSON WITHOUT PERMISSION

London branches open six days a week Mon - Sat

Canary Wharf | City | Colindale | Dartmouth Park | Ealing | Fulham
Hammersmith | Hampstead | Highgate | Hyde Park | Kensington | Kew
Knightsbridge | Nine Elms | Shoreditch | Southall | Surrey Quays
Wapping | Wembley | White City | Woolwich

International offices

China | Hong Kong SAR | India | Israel | Malaysia | Middle East | Pakistan
Qatar | Singapore | South Africa | Thailand | Turkey



Benham & Reeves