



Benham & Reeves

Michael Road, Imperial Wharf, SW6

£700 per week, £3,033 per month + fees

🛏 1 Bedroom 🚿 1 Bathroom 🛋 Unfurnished

A Brand-new Stylish apartment situated in luxury development, with 5* resident amenities and located in a celebrated address with easy access from Fulham Broadway station.

Please [click here](#) for full detail

Property features

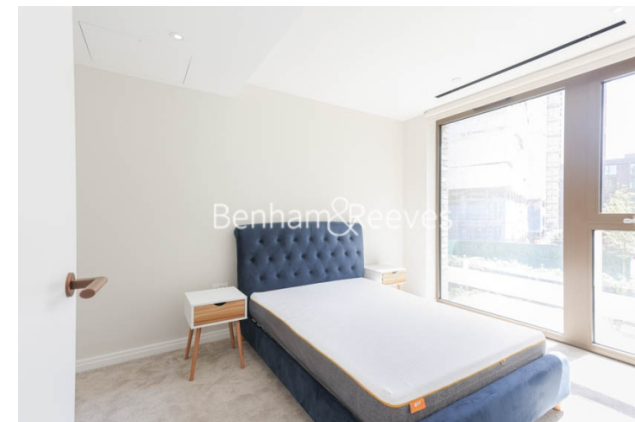
1 Double Bedroom Apartment with Built-in Wardrobe | Fully Fitted Open Plan Kitchen Integrated | Internal Storage Room / Utility Room | Air Ventilation / Underfloor Heating / Air Conditioning | 24 Hr Concierge / 24 Hr Security / Communal Gardens | EPC-TBC | Reception Room with Dining Area & Floor to Ceiling Large | Luxurious Stone Finish Double Bathroom with Feature Lighting | Quality Furnished / LED Spotlights / Private Balcony | Fulham Broadway station

For more information about this property,
please call our Fulham branch on

020 7348 7620

Redress & Client Money Protection :

Benham and Reeves are members of The Property Ombudsman redress scheme and have Client Money protection with ARLA Propertymark. You can find more information on our website at <https://www.benhams.com/membership/>



Benham & Reeves



Michael Road, Imperial Wharf, SW6

£700 per week, £3,033 per month + fees

www.benhams.com

London branches open six days a week Mon - Sat

Canary Wharf | City | Colindale | Dartmouth Park | Ealing | Fulham
Hammersmith | Hampstead | Highgate | Hyde Park | Kensington | Kew
Knightsbridge | Nine Elms | Shoreditch | Southall | Surrey Quays
Wapping | Wembley | White City | Woolwich

International offices

China | Hong Kong SAR | India | Indonesia | Qatar | Malaysia | Middle East | Pakistan
Singapore | South Africa | Thailand | Turkey

