



Benham & Reeves

## **Sands End Lane, Imperial Wharf, SW6**

£877 per week, £3,800 per month + fees

🛏 2 Bedrooms    🚿 2 Bathrooms    🛋 Furnished

A stylish apartment situated in a desirable development, with a host of amenities onsite, located in one of South West London's most iconic areas, close to the River Thames. The property enjoys easy access from Fulham Broadway station.

Please [click here](#) for full detail

## Property features

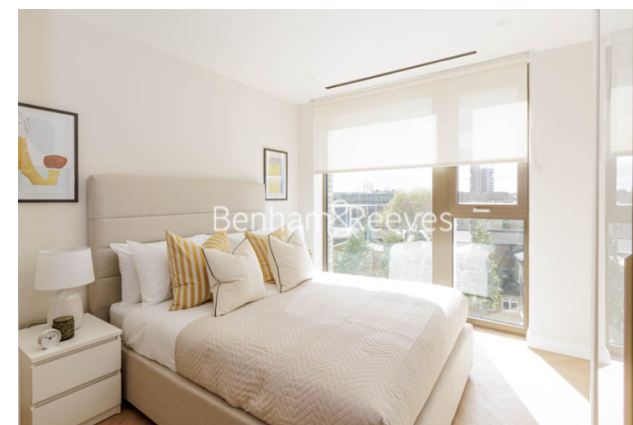
**2 Double Bedroom Apartment both having Built-in Wardrobe | Fully Fitted Open Plan Kitchen Integrated | Internal Area: 736 Sq Ft / Internal Storage Room | Air Ventilation / Underfloor Heating / Air Conditioning | 4 Hr Concierge / 24 Hr Security / Communal Gardens | EPC-B | Gymnasium with Two Fitness Studios | Luxurious Stone Finish Double Bathroom with Feature Lighting | Quality Furnished / LED Spotlights / Private Balcony | Nearby Fulham Broadway Station**

For more information about this property,  
please call our Property Management branch on

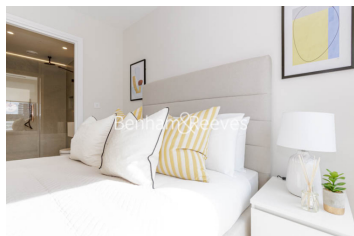
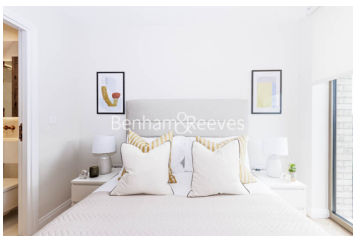
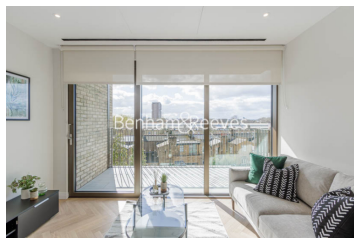
**020 7319 9740**

Redress & Client Money Protection :

Benham and Reeves are members of The Property Ombudsman redress scheme and have Client Money protection with ARLA Propertymark. You can find more information on our website at <https://www.benhams.com/membership/>



Benham & Reeves

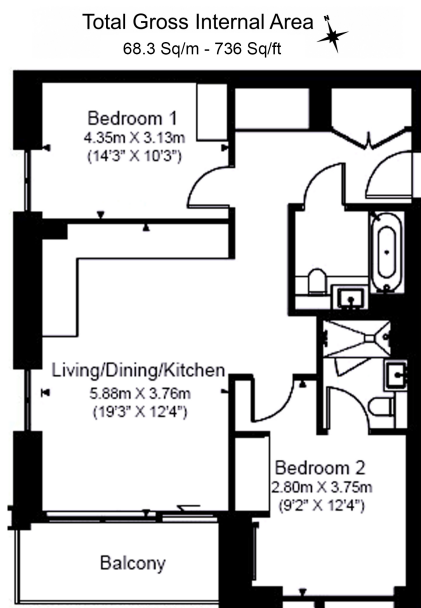




# Sands End Lane, Imperial Wharf, SW6

£877 per week, £3,800 per month + fees

[www.benhams.com](http://www.benhams.com)



Floor Plan measurements are approximate and are for illustrative purposes only. While we do not doubt the floor plans accuracy, we make no guarantee, warranty or representation as to the accuracy and completeness of the floor plan.

| Score | Energy rating | Current | Potential |
|-------|---------------|---------|-----------|
| 92+   | A             |         |           |
| 81-91 | B             | 85   B  | 85   B    |
| 69-80 | C             |         |           |
| 55-68 | D             |         |           |
| 39-54 | E             |         |           |
| 21-38 | F             |         |           |
| 1-20  | G             |         |           |

## London branches open six days a week Mon - Sat

Canary Wharf | City | Colindale | Dartmouth Park | Ealing | Fulham  
Hammersmith | Hampstead | Highgate | Hyde Park | Kensington | Kew  
Knightsbridge | Nine Elms | Shoreditch | Southall | Surrey Quays  
Wapping | Wembley | White City | Woolwich

## International offices

China | Hong Kong SAR | India | Indonesia | Qatar | Malaysia | Middle East |  
Singapore | South Africa | Thailand | Turkey



Benham & Reeves