



Benham & Reeves

## Thames Point, Imperial Wharf, SW6

£900 per week, £3,900 per month + fees

🛏 3 Bedrooms    🚿 2 Bathrooms    🛋 Unfurnished

Superb, large 4th floor apartment, with direct River views, situated in an exclusive Riverside development. Within a short walking distance from Imperial Wharf Overground Station.

Please [click here](#) for full detail

## Property features

**3 Bedroom | 2 Bathroom | Reception | Unfurnished | Kitchen | EPC-B | 24 hour concierge | Gym Facilities | Nearby Imperial Wharf**

For more information about this property,  
please call our Fulham branch on

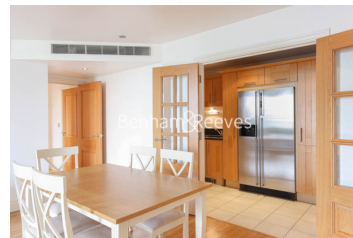
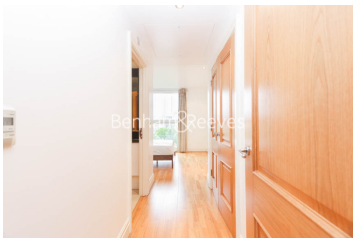
**020 7348 7620**

Redress & Client Money Protection :

Benham and Reeves are members of The Property Ombudsman redress scheme and have Client Money protection with ARLA Propertymark. You can find more information on our website at <https://www.benhams.com/membership/>



Benham & Reeves

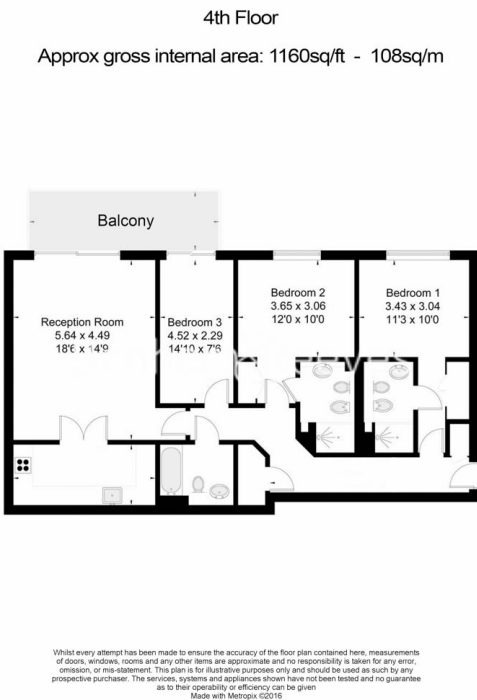




# Thames Point, Imperial Wharf, SW6

£900 per week, £3,900 per month + fees

www.benhams.com



Score	Energy rating	Current	Potential
92+	A		
81-91	B	83   B	85   B
69-80	C		
55-68	D		
39-54	E		
21-38	F		
1-20	G		

## London branches open six days a week Mon - Sat

Canary Wharf | City | Colindale | Dartmouth Park | Ealing | Fulham  
Hammersmith | Hampstead | Highgate | Hyde Park | Kensington | Kew  
Knightsbridge | Nine Elms | Shoreditch | Southall | Surrey Quays  
Wapping | Wembley | White City | Woolwich

## International offices

China | Hong Kong SAR | India | Indonesia | Qatar | Malaysia | Middle East |  
Singapore | South Africa | Thailand | Turkey

