



Benham & Reeves

**Lockgate Road, Imperial Wharf, SW6**

£646 per week, £2,800 per month + fees

 1 Bedroom     1 Bathroom     Furnished

Modern fourth floor apartment, with luxury on-site amenities, included in the rent, is set in the new building in a sought-after Riverside development in Fulham.

Please [click here](#) for full detail

## Property features

**New build in Chelsea creek | Private balcony | Gym and spa included in the rent | Double Bedroom Apartment both having Built-in Wardrobe | Internal Area: 560 Sq Ft /Internal Storage Room | EPC-B | Air Ventilation / Underfloor Heating / Air Conditioning | 24 Hr Concierge / 24 Hr Security / Communal Gardens | Quality Furnished / LED Spotlights / Private Balcony | Nearby Imperial Wharf Overground station**

For more information about this property,  
please call our Fulham branch on

**020 7348 7620**

Redress & Client Money Protection :

Benham and Reeves are members of The Property Ombudsman redress scheme and have Client Money protection with ARLA Propertymark. You can find more information on our website at <https://www.benhams.com/membership/>



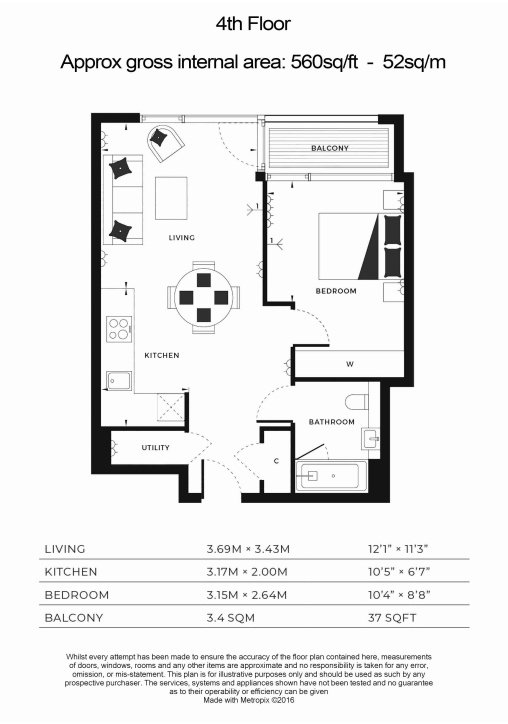
Benham & Reeves



# Lockgate Road, Imperial Wharf, SW6

£646 per week, £2,800 per month + fees

www.benhams.com



Score	Energy rating	Current	Potential
92+	A		
81-91	B	84   B	84   B
69-80	C		
55-68	D		
39-54	E		
21-38	F		
1-20	G		

## London branches open six days a week Mon - Sat

Canary Wharf | City | Colindale | Dartmouth Park | Ealing | Fulham  
Hammersmith | Hampstead | Highgate | Hyde Park | Kensington | Kew  
Knightsbridge | Nine Elms | Shoreditch | Southall | Surrey Quays  
Wapping | Wembley | White City | Woolwich



## International offices

China | Hong Kong SAR | India | Indonesia | Qatar | Malaysia | Middle East | Pakistan  
Singapore | South Africa | Thailand | Turkey