



Benham & Reeves

Boxtree House, Imperial Wharf, SW6

£1,442 per week, £6,250 per month + fees

 3 Bedrooms  3 Bathrooms  Unfurnished

Spacious 5th floor penthouse apartment, with outstanding space and great views of both the surrounding landscaped gardens and the River Thames in Fulham. Ideally located for Imperial Wharf Overground Station.

Please [click here](#) for full detail

Property features

**3 Bedrooms | 3 Bathrooms | Reception | Unfurnished | Fitted Kitchen | EPC-C | 24 Hour Concierge
| Close to Amenities | Nearby Imperial Wharf Station**

For more information about this property,
please call our Fulham branch on

020 7348 7620

Redress & Client Money Protection :

Benham and Reeves are members of The Property Ombudsman redress scheme and have Client Money protection with ARLA Propertymark. You can find more information on our website at <https://www.benhams.com/membership/>



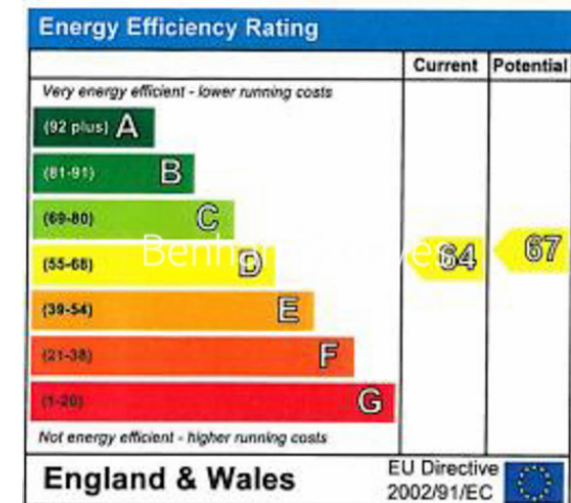
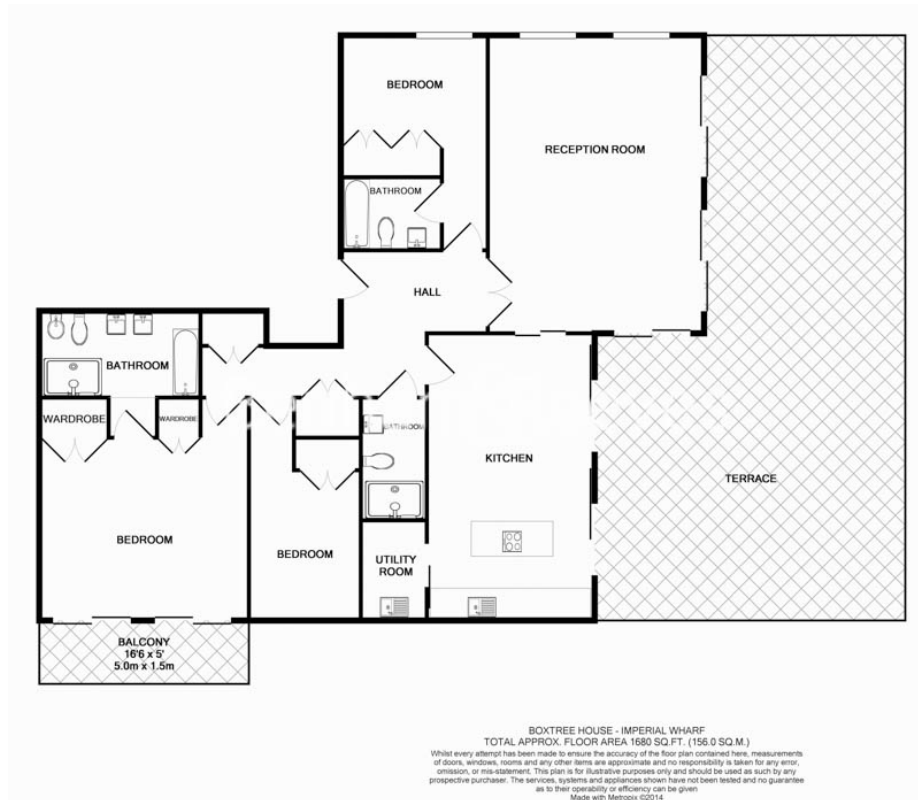
Benham & Reeves



Boxtree House, Imperial Wharf, SW6

£1,442 per week, £6,250 per month + fees

www.benhams.com



London branches open six days a week Mon - Sat

Canary Wharf | City | Colindale | Dartmouth Park | Ealing | Fulham
Hammersmith | Hampstead | Highgate | Hyde Park | Kensington | Kew
Knightsbridge | Nine Elms | Shoreditch | Southall | Surrey Quays
Wapping | Wembley | White City | Woolwich

International offices

China | Hong Kong SAR | India | Indonesia | Qatar | Malaysia | Middle East |
Singapore | South Africa | Thailand | Turkey



Benham & Reeves