



Benham & Reeves

Harbour Reach, Imperial Wharf, SW6

£727 per week, £3,150 per month + fees

🛏️ 2 Bedrooms 🚿 2 Bathrooms 🛋️ Furnished

Modern 2nd floor apartment with direct River views situated in a landmark Riverside development, a short walk from Imperial Wharf Station.

Please [click here](#) for full detail

Property features

2 Bedrooms | 2 Bathrooms | Reception | Furnished | Fitted Kitchen | EPC-B | 24 hour Concierge | Fitness gym | Nearby Imperial Wharf Station

For more information about this property,
please call our Fulham branch on

020 7348 7620



Redress & Client Money Protection :
Benham and Reeves are members of The Property Ombudsman redress scheme and have Client Money protection with ARLA Propertymark.
You can find more information on our website at <https://www.benhamandreeves.com/membership/>

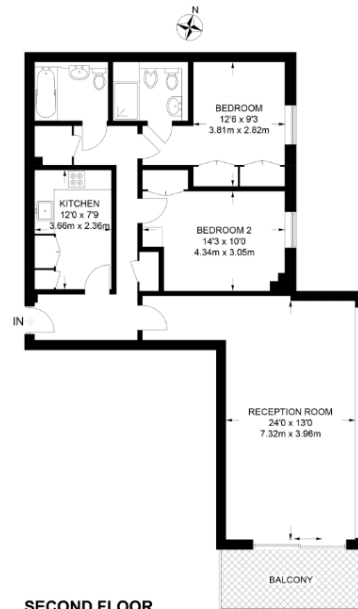
Benham&Reeves



Harbour Reach, Imperial Wharf, SW6

£727 per week, £3,150 per month + fees

www.benhams.com



Score	Energy rating	Current	Potential
92+	A		
81-91	B	84 B	85 B
69-80	C		
55-68	D		
39-54	E		
21-38	F		
1-20	G		

London branches open six days a week Mon - Sat

Canary Wharf | City | Colindale | Dartmouth Park | Ealing | Fulham
Hammersmith | Hampstead | Highgate | Hyde Park | Kensington | Kew
Knightsbridge | Nine Elms | Shoreditch | Southall | Surrey Quays
Wapping | Wembley | White City | Woolwich

International offices

China | Hong Kong SAR | India | Indonesia | Qatar | Malaysia | Middle East | Pakistan
Singapore | South Africa | Thailand | Turkey

