



Benham & Reeves

The Boulevard, Imperial Wharf, SW6

£600 per week, £2,600 per month + fees

🛏️ 2 Bedrooms 🚿 2 Bathrooms 🛋️
Furnished/UnFurnished

A modern apartment set in a popular riverside development, imperial wharf. The property is close to the amenities of Fulham and Chelsea and is moments, away from imperial wharf overground station.

Please [click here](#) for full detail

Property features

2 Bedrooms | 2 Bathrooms | Reception | Balcony | River views | EPC-B | Residents Gym | 24 hour Concierge | Nearby Imperial Wharf Station

For more information about this property,
please call our Fulham branch on

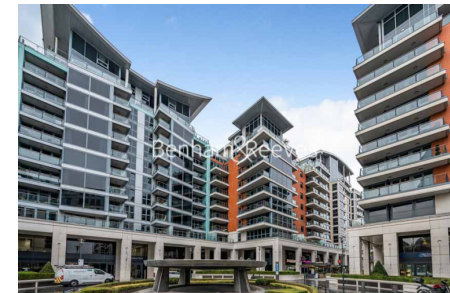
020 7348 7620

Redress & Client Money Protection :

Benham and Reeves are members of The Property Ombudsman redress scheme and have Client Money protection with ARLA Propertymark. You can find more information on our website at <https://www.benhamandreeves.com/membership/>



Benham & Reeves



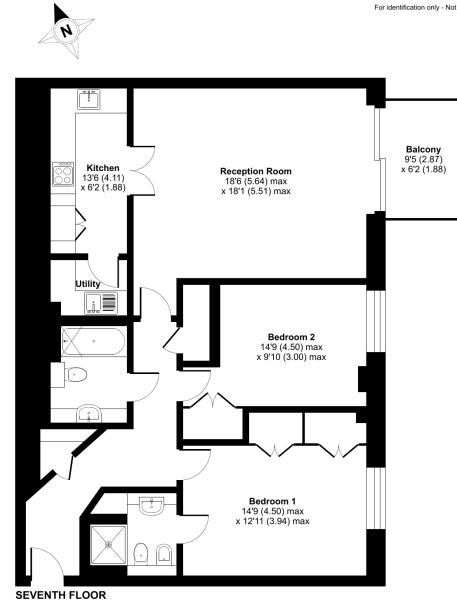
The Boulevard, Imperial Wharf, SW6

£600 per week, £2,600 per month + fees

www.benhams.com

Harbour Reach The Boulevard, Imperial Wharf, London,

Approximate Area = 1020 sq ft / 94.7 sq m
For identification only - Not to scale



Certified Property Measurement
Floor plan produced in accordance with RICS Property Measurement Standards incorporating International Property Measurement Standards (IPMS Residential) © rchecom 2023.
Produced for Benham & Reeves REF: 1008845

Score	Energy rating	Current	Potential
92+	A		
81-91	B	82 B	82 B
69-80	C		
55-68	D		
39-54	E		
21-38	F		
1-20	G		

London branches open six days a week Mon - Sat

Canary Wharf | City | Colindale | Dartmouth Park | Ealing | Fulham
Hammersmith | Hampstead | Highgate | Hyde Park | Kensington | Kew
Knightsbridge | Nine Elms | Shoreditch | Southall | Surrey Quays
Wapping | Wembley | White City | Woolwich

International offices

China | Hong Kong SAR | India | Indonesia | Qatar | Malaysia | Middle East | Pakistan
Singapore | South Africa | Thailand | Turkey



Benham & Reeves