



Benham & Reeves

The Boulevard, Imperial Wharf, SW6

£1,250 per week, £5,417 per month + fees

 3 Bedrooms  3 Bathrooms  Furnished

This well-presented 9/10th floor apartment within a vibrant and popular Riverside development, offering modern city living at its finest with scenic River views and exclusive on-site amenities. Located within a stone's throw of Imperial Wharf Station.

Please [click here](#) for full detail

Property features

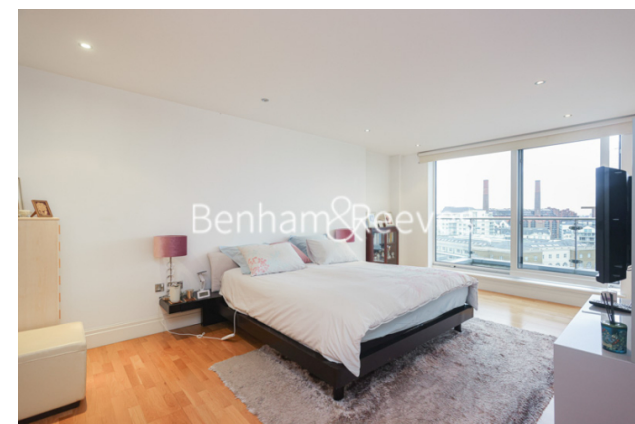
3 Bedrooms | 3 Bathrooms | Reception | Furnished | Balcony | EPC-B | River Views | Wood Floors | Large Floor-To-Ceiling Windows | Nearby Imperial Wharf station

For more information about this property,
please call our Fulham branch on

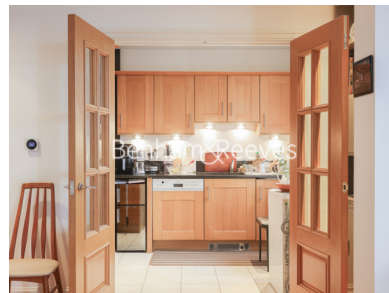
020 7348 7620

Redress & Client Money Protection :

Benham and Reeves are members of The Property Ombudsman redress scheme and have Client Money protection with ARLA Propertymark. You can find more information on our website at <https://www.benhamandreeves.com/membership/>



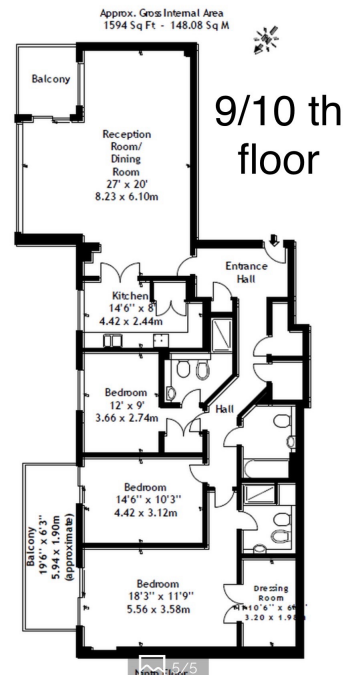
Benham&Reeves



The Boulevard, Imperial Wharf, SW6

£1,250 per week, £5,417 per month + fees

www.benhams.com



Score	Energy rating	Current	Potential
92+	A		
81-91	B	81 B	83 B
69-80	C		
55-68	D		
39-54	E		
21-38	F		
1-20	G		

London branches open six days a week Mon - Sat

Canary Wharf | City | Colindale | Dartmouth Park | Ealing | Fulham
Hammersmith | Hampstead | Highgate | Hyde Park | Kensington | Kew
Knightsbridge | Nine Elms | Shoreditch | Southall | Surrey Quays
Wapping | Wembley | White City | Woolwich

International offices

China | Hong Kong SAR | India | Indonesia | Qatar | Malaysia | Middle East | Pakistan
Singapore | South Africa | Thailand | Turkey

