



Benham & Reeves

**Townmead Road, Imperial Wharf, SW6**

£646 per week, £2,800 per month + fees

 2 Bedrooms    2 Bathrooms    Furnished

A delightful ground floor apartment, with off-street parking, set in a highly desirable, development, close to the amenities of Fulham Broadway. The property is just a stone's throw away from Imperial Wharf overground station.

Please [click here](#) for full detail

## Property features

**2 Bedroom | 2 Bathroom | Private Garden | Ground floor | Furnished | EPC-C | Parking included | Fitted kitchen with well know appliances | Short walk to Imperial Wharf station and Fulham Broadway**

For more information about this property,  
please call our Fulham branch on

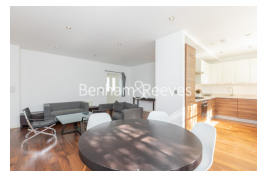
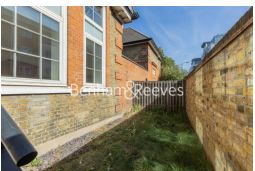
**020 7348 7620**

Redress & Client Money Protection :

Benham and Reeves are members of The Property Ombudsman redress scheme and have Client Money protection with ARLA Propertymark. You can find more information on our website at <https://www.benhams.com/membership/>



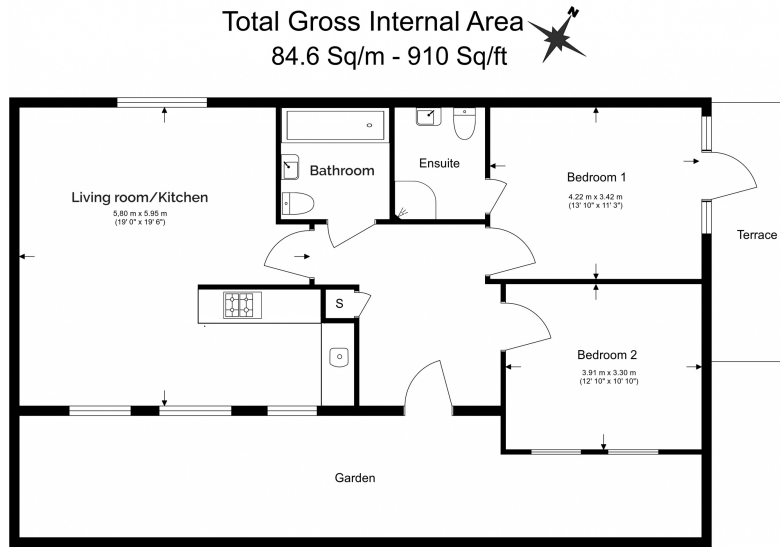
Benham & Reeves



# Townmead Road, Imperial Wharf, SW6

£646 per week, £2,800 per month + fees

www.benhams.com



Ground floor

Floor Plan measurements are approximate and are for illustrative purposes only. While we do not doubt the floor plans accuracy, we make no guarantee, warranty or representation as to the accuracy and completeness of the floor plan.

Score	Energy rating	Current	Potential
92+	A		
81-91	B		
69-80	C	79 C	79 C
55-68	D		
39-54	E		
21-38	F		
1-20	G		

## London branches open six days a week Mon - Sat

Canary Wharf | City | Colindale | Dartmouth Park | Ealing | Fulham  
Hammersmith | Hampstead | Highgate | Hyde Park | Kensington | Kew  
Knightsbridge | Nine Elms | Shoreditch | Southall | Surrey Quays  
Wapping | Wembley | White City | Woolwich

## International offices

China | Hong Kong SAR | India | Indonesia | Qatar | Malaysia | Middle East |  
Singapore | South Africa | Thailand | Turkey



Benham & Reeves