



Benham & Reeves

## Harbour Reach, Imperial Wharf, SW6

£785 per week, £3,402 per month + fees

🛏 2 Bedrooms    🚿 1 Bathroom    🛋 Unfurnished

A bright 8th floor apartment, with parking, situated within a landmark development by St George., ideally located for Imperial Wharf Station.

Please [click here](#) for full detail

## Property features

**2 bedroom | 2 bathroom | Allocated parking space | Unfurnished | Large living room | EPC-C | 8th floor | Balcony - River views / Communal gardens | Spacious rooms/On-site gym | Imperial Wharf Station**

For more information about this property,  
please call our Fulham branch on

**020 7348 7620**

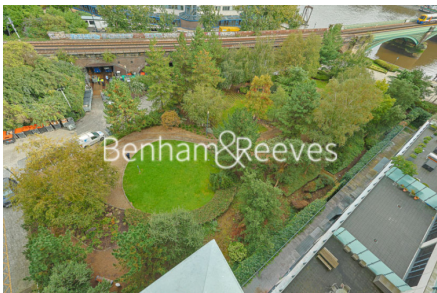
Redress & Client Money Protection :

Benham and Reeves are members of The Property Ombudsman redress scheme and have Client Money protection with ARLA Propertymark. You can find more information on our website at <https://www.benhams.com/membership/>



**Benham & Reeves**

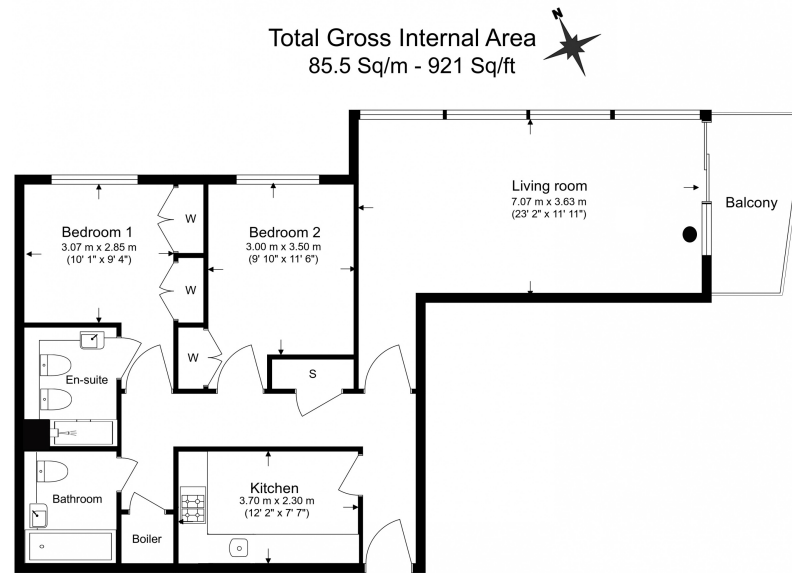




# Harbour Reach, Imperial Wharf, SW6

£785 per week, £3,402 per month + fees

[www.benhams.com](http://www.benhams.com)



Benham & Reeves

Floor Plan measurements are approximate and are for illustrative purposes only. While we do not doubt the floor plans accuracy, we make no guarantee, warranty or representation as to the accuracy and completeness of the floor plan.

Score	Energy rating	Current	Potential
92+	A		
81-91	B		
69-80	C	73 C	75 C
55-68	D		
39-54	E		
21-38	F		
1-20	G		

## London branches open six days a week Mon - Sat

Canary Wharf | City | Colindale | Dartmouth Park | Ealing | Fulham  
Hammersmith | Hampstead | Highgate | Hyde Park | Kensington | Kew  
Knightsbridge | Nine Elms | Shoreditch | Southall | Surrey Quays  
Wapping | Wembley | White City | Woolwich

## International offices

China | Hong Kong SAR | India | Indonesia | Qatar | Malaysia | Middle East | Pakistan  
Singapore | South Africa | Thailand | Turkey



Benham & Reeves