



Benham & Reeves

## Thames Point, Imperial Wharf, SW6

£923 per week, £4,000 per month + fees

 3 Bedrooms    3 Bathrooms    Furnished

A spacious, modern apartment set on the eighth floor of Thames point, part of the sought-after riverside development, Imperial Wharf.

Please [click here](#) for full detail

## Property features

**3 bedroom | 3 bathroom | Allocated parking space | Furnished | Large living room | EPC-B | River views | Balcony/ Communal gardens | 24/7 concierge /On-site gym | Imperial Wharf Overground Station**

For more information about this property, please call our Fulham branch on

**020 7348 7620**

Redress & Client Money Protection :

Benham and Reeves are members of The Property Ombudsman redress scheme and have Client Money protection with ARLA Propertymark. You can find more information on our website at <https://www.benhams.com/membership/>



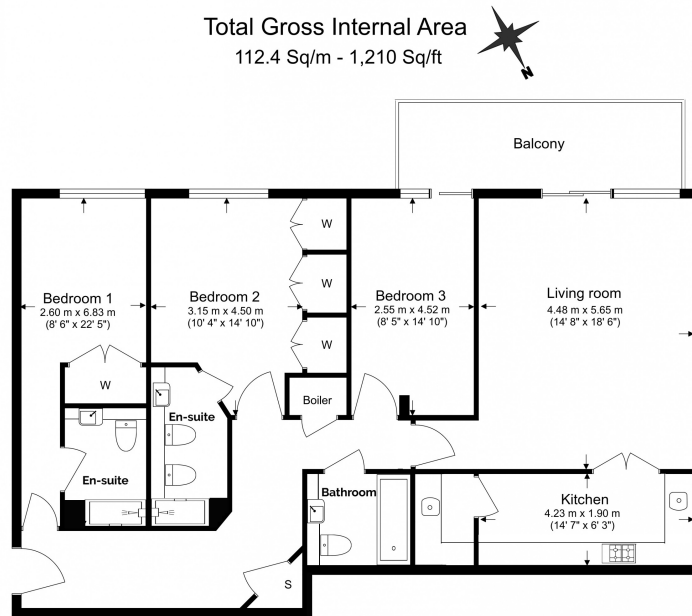
Benham & Reeves



# Thames Point, Imperial Wharf, SW6

£923 per week, £4,000 per month + fees

www.benhams.com



Benham & Reeves

Floor Plan measurements are approximate and are for illustrative purposes only. While we do not doubt the floor plans accuracy, we make no guarantee, warranty or representation as to the accuracy and completeness of the floor plan.

## Energy rating and score

This property's energy rating is C. It has the potential to be B.

[See how to improve this property's energy efficiency.](#)

Score	Energy rating	Current	Potential
92+	A		
81-91	B		83 B
69-80	C	80 C	
55-68	D		
39-54	E		
21-38	F		
1-20	G		

## London branches open six days a week Mon - Sat

Canary Wharf | City | Colindale | Dartmouth Park | Ealing | Fulham  
 Hammersmith | Hampstead | Highgate | Hyde Park | Kensington | Kew  
 Knightsbridge | Nine Elms | Shoreditch | Southall | Surrey Quays  
 Wapping | Wembley | White City | Woolwich

## International offices

China | Hong Kong SAR | India | Indonesia | Qatar | Malaysia | Middle East | Pakistan  
 Singapore | South Africa | Thailand | Turkey



Benham & Reeves