



Benham & Reeves

**The Boulevard, Imperial Wharf, SW6**

£692 per week, £3,000 per month + fees

 2 Bedrooms    2 Bathrooms    Furnished

Modern 4th floor apartment with direct River views situated in a landmark Riverside development, a short walk from Imperial Wharf Station.

Stunning apartment set on the 4th floor of Harbour Reach, situated within the landmark Imperial Wharf development by St George.

Please [click here](#) for full detail

## Property features

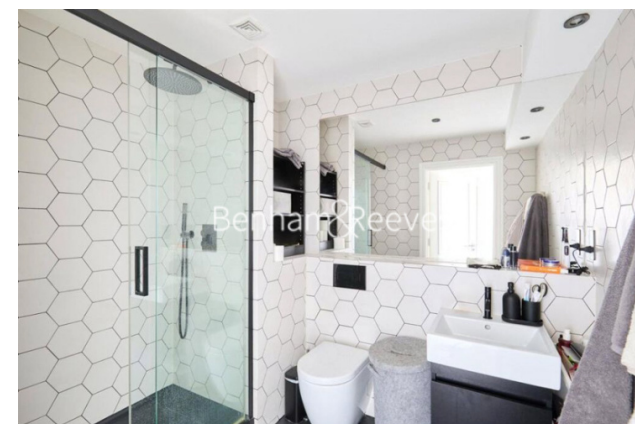
**2 Bedrooms | 2 Bathrooms | Reception | Balcony | Furnished | EPC- B | 24 hour concierge | 4th floor | River Views | Nearby Imperial Wharf Station**

For more information about this property, please call our Fulham branch on

**020 7348 7620**

Redress & Client Money Protection :

Benham and Reeves are members of The Property Ombudsman redress scheme and have Client Money protection with ARLA Propertymark. You can find more information on our website at <https://www.benhams.com/membership/>



Benham & Reeves



# The Boulevard, Imperial Wharf, SW6

£692 per week, £3,000 per month + fees

www.benhams.com

[See how to improve this property's energy efficiency.](#)

Score	Energy rating	Current	Potential
92+	A		
81-91	B		
69-80	C	70 C	72 C
55-68	D		
39-54	E		
21-38	F		
1-20	G		

## London branches open six days a week Mon - Sat

Canary Wharf | City | Colindale | Dartmouth Park | Ealing | Fulham  
Hammersmith | Hampstead | Highgate | Hyde Park | Kensington | Kew  
Knightsbridge | Nine Elms | Shoreditch | Southall | Surrey Quays  
Wapping | Wembley | White City | Woolwich

## International offices

China | Hong Kong SAR | India | Indonesia | Qatar | Malaysia | Middle East | Pakistan  
Singapore | South Africa | Thailand | Turkey

