



Benham & Reeves

Octavia House, Imperial Wharf, SW6

£496 per week, £2,150 per month + fees

🛏 1 Bedroom 🚿 1 Bathroom 🛋 Furnished

Stunning 4th floor modern apartment situated within a vibrant Riverside development in the heart of Fulham with Imperial Wharf Overground Station.

Please [click here](#) for full detail

Property features

Gym included | High quality modern furniture | 24 Hr Concierge / 24 Hr Security / Communal Gardens | Fully Fitted Kitchen Integrated with Well-Known Appliances | Luxurious bathroom with ample storage | EPC-B | Lifts | Near to supermarkets | A 2 minute walk to the Thames River | Nearby Imperial Wharf Overground Station

For more information about this property,
please call our Fulham branch on

020 7348 7620

Redress & Client Money Protection :

Benham and Reeves are members of The Property Ombudsman redress scheme and have Client Money protection with ARLA Propertymark. You can find more information on our website at <https://www.benhams.com/membership/>



Benham & Reeves



Octavia House, Imperial Wharf, SW6

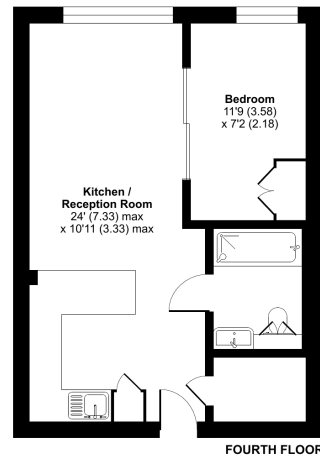
£496 per week, £2,150 per month + fees

www.benhams.com



Townmead Road, London, SW6

Approximate Area = 419 sq ft / 39 sq m
For identification only - Not to scale



ⓘ Floor plan produced in accordance with RICS Property Measurement 2nd Edition, incorporating International Property Measurement Standards (IPMIS Residential). © rics.com 2025. Produced for Benham & Reeves. REF: 1276255

London branches open six days a week Mon - Sat

Canary Wharf | City | Colindale | Dartmouth Park | Ealing | Fulham
Hammersmith | Hampstead | Highgate | Hyde Park | Kensington | Kew
Knightsbridge | Nine Elms | Shoreditch | Southall | Surrey Quays
Wapping | Wembley | White City | Woolwich

International offices

China | Hong Kong SAR | India | Indonesia | Qatar | Malaysia | Middle East | Pakistan
Singapore | South Africa | Thailand | Turkey



Benham & Reeves