



Benham & Reeves

Waterside Tower, Imperial Wharf, SW6

£1,385 per week, £6,000 per month + fees

🛏 3 Bedrooms 🚿 3 Bathrooms 🛋 Unfurnished

Stunning, spacious sixth floor apartment with direct River views and parking situated in Imperial Wharf, Fulham. Conveniently located close to Imperial Wharf Overground Station.

Please [click here](#) for full detail

Property features

3 Bedrooms | 3 Bathrooms | Reception | Furnished | Kitchen | EPC-C | Comfort Cooling | Exclusive Gym | Nearby Imperial Wharf

For more information about this property,
please call our Fulham branch on

020 7348 7620

Redress & Client Money Protection :

Benham and Reeves are members of The Property Ombudsman redress scheme and have Client Money protection with ARLA Propertymark. You can find more information on our website at <https://www.benhamandreeves.com/membership/>



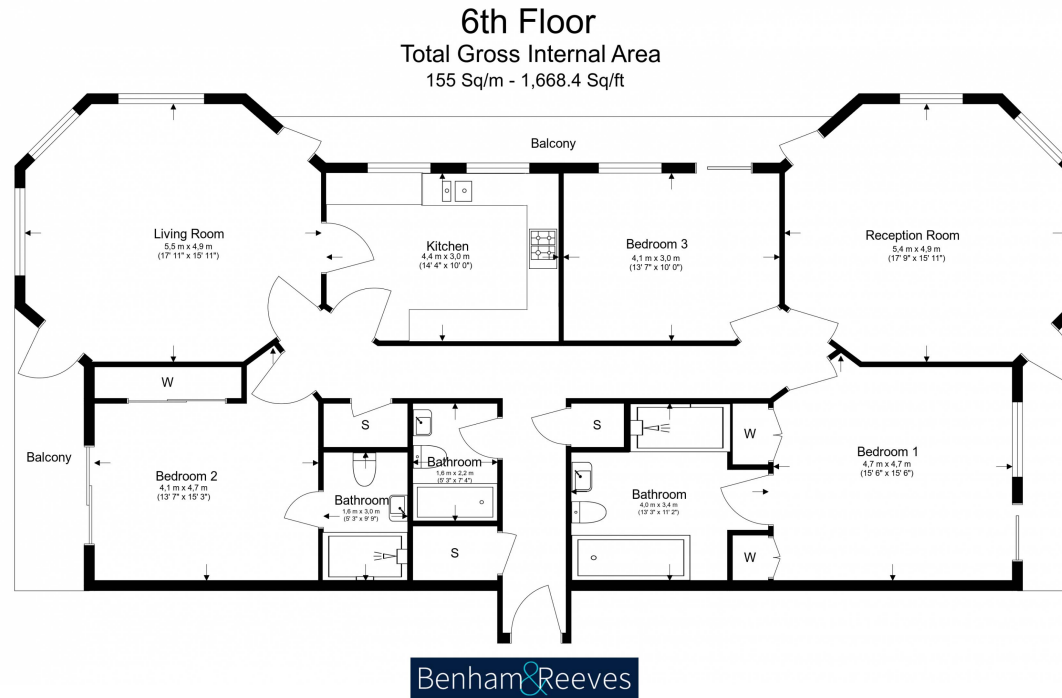
Benham&Reeves



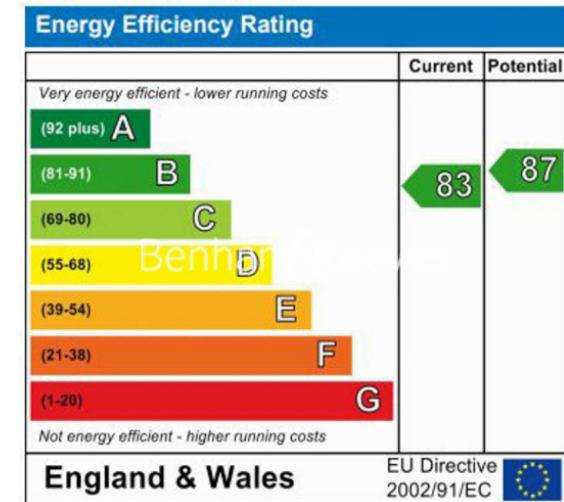
Waterside Tower, Imperial Wharf, SW6

£1,385 per week, £6,000 per month + fees

www.benhams.com



Floor Plan measurements are approximate and are for illustrative purposes only. While we do not doubt the floor plans accuracy, we make no guarantee, warranty or representation as to the accuracy and completeness of the floor plan.



London branches open six days a week Mon - Sat

Canary Wharf | City | Colindale | Dartmouth Park | Ealing | Fulham
Hammersmith | Hampstead | Highgate | Hyde Park | Kensington | Kew
Knightsbridge | Nine Elms | Shoreditch | Southall | Surrey Quays
Wapping | Wembley | White City | Woolwich



International offices

China | Hong Kong SAR | India | Indonesia | Qatar | Malaysia | Middle East | Pakistan
Singapore | South Africa | Thailand | Turkey

Benham & Reeves