



Benham & Reeves

The Boulevard, Imperial Wharf, SW6

£762 per week, £3,300 per month + fees

🛏 2 Bedrooms 🚿 2 Bathrooms 🛋 Furnished

MODERN 1st floor flat in this landmark development with a VERY LARGE RECEPTION room with dining area and access to a PRIVATE BALCONY. Added benefits include COMFORT COOLING, WOOD FLOORS, 24 hour PORTERAGE and LIFTS to all floors.

Please [click here](#) for full detail

Property features

2 Bedrooms | 2 Bathrooms | 1 Reception | Furnished | Fitted kitchen | EPC-C | Wood floors | Balcony space | 24 hour concierge | Imperial Wharf Overground station

For more information about this property,
please call our Fulham branch on

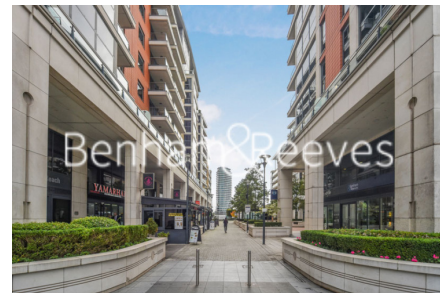
020 7348 7620

Redress & Client Money Protection :

Benham and Reeves are members of The Property Ombudsman redress scheme and have Client Money protection with ARLA Propertymark. You can find more information on our website at <https://www.benhams.com/membership/>



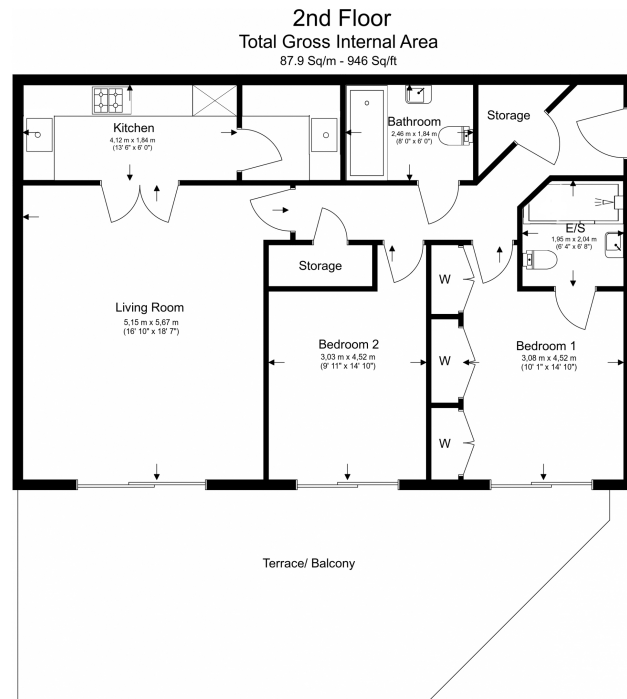
Benham & Reeves



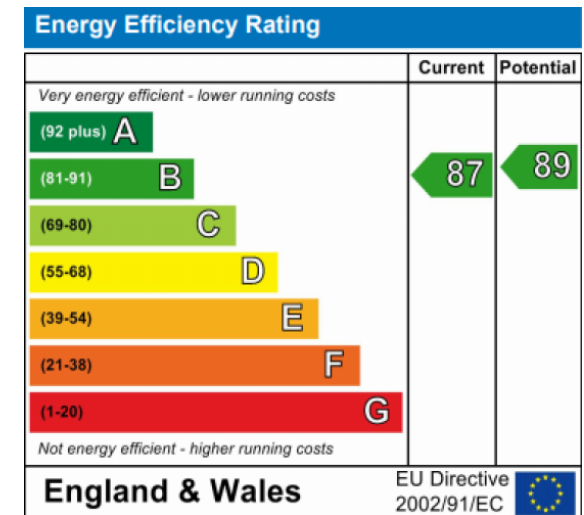
The Boulevard, Imperial Wharf, SW6

£762 per week, £3,300 per month + fees

www.benhams.com



Floor Plan measurements are approximate and are for illustrative purposes only. While we do not doubt the floor plans accuracy, we make no guarantee, warranty or representation as to the accuracy and completeness of the floor plan.



London branches open six days a week Mon - Sat

Canary Wharf | City | Colindale | Dartmouth Park | Ealing | Fulham
Hammersmith | Hampstead | Highgate | Hyde Park | Kensington | Kew
Knightsbridge | Nine Elms | Shoreditch | Southall | Surrey Quays
Wapping | Wembley | White City | Woolwich

International offices

China | Hong Kong SAR | India | Indonesia | Qatar | Malaysia | Middle East | Pakistan
Singapore | South Africa | Thailand | Turkey



Benham & Reeves