



Benham & Reeves

Townmead Road, Imperial Wharf, SW6

£669 per week, £2,900 per month + fees

 2 Bedrooms  1 Bathroom  Furnished

Modern riverside apartment in Nocavia House, offered furnished. Features include:

- Bright open-plan living space with ample natural light
- Fully fitted kitchen with integrated appliances
- Two double bedrooms with storage
- bathroom with shower

Please [click here](#) for full detail

Property features

2 bedroom apartment | furnished | Gym and 24 hr concierge | Landscaped gardens | LARGE Terrace | EPC - B | Lift access , 3rd floor | Ample natural light | Near Imperial Wharf station

For more information about this property,
please call our Fulham branch on

020 7348 7620

Redress & Client Money Protection :

Benham and Reeves are members of The Property Ombudsman redress scheme and have Client Money protection with ARLA Propertymark. You can find more information on our website at <https://www.benhamandreeves.com/membership/>



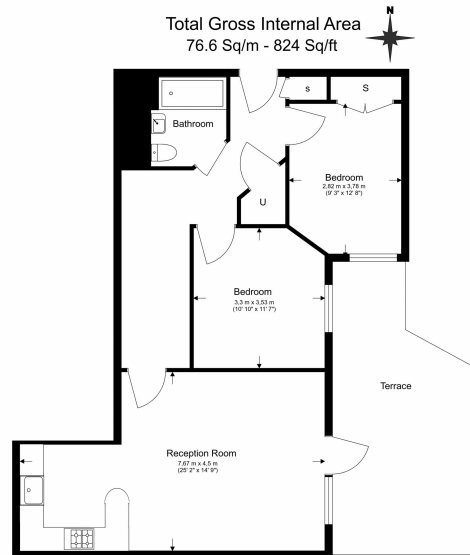
Benham & Reeves



Townmead Road, Imperial Wharf, SW6

£669 per week, £2,900 per month + fees

www.benhams.com



Benham & Reeves

Floor Plan measurements are approximate and are for illustrative purposes only. While we do not doubt the floor plans accuracy, we make no guarantee, warranty or representation as to the accuracy and completeness of the floor plan.

Score	Energy rating	Current	Potential
92+	A		
81-91	B		84 B
69-80	C	70 C	
55-68	D		
39-54	E		
21-38	F		
1-20	G		

London branches open six days a week Mon - Sat

Canary Wharf | City | Colindale | Dartmouth Park | Ealing | Fulham
Hammersmith | Hampstead | Highgate | Hyde Park | Kensington | Kew
Knightsbridge | Nine Elms | Shoreditch | Southall | Surrey Quays
Wapping | Wembley | White City | Woolwich

International offices

China | Hong Kong SAR | India | Indonesia | Qatar | Malaysia | Middle East | Pakistan
Singapore | South Africa | Thailand | Turkey



Benham & Reeves