



Benham & Reeves

Octavia House, Imperial Wharf, SW6

£508 per week, £2,200 per month + fees

 Studio  1 Bathroom  Furnished

A stunning 5th floor Manhattan studio apartment within Imperial Wharf, one of London's most popular riverside landmark developments. Good transport connections bring Octavia House within easy reach of the fashionable areas of Chelsea and King's Road.

Please [click here](#) for full detail

Property features

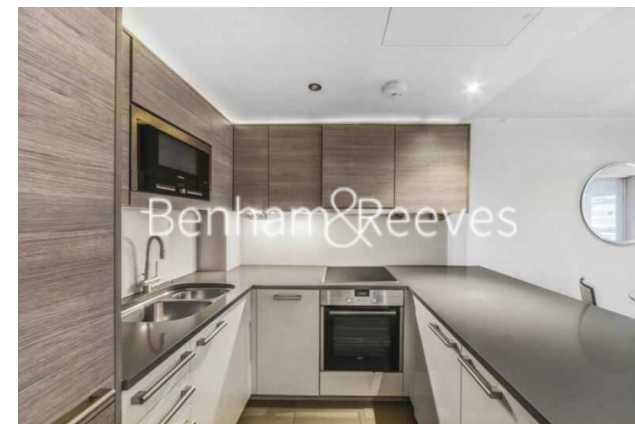
Reception | Kitchen | Bedroom | Bathroom | Balcony | EPC-B | 24 hour concierge lifts to all floors | Exclusive gym | Nearby Imperial Wharf Overground Station

For more information about this property,
please call our Fulham branch on

020 7348 7620

Redress & Client Money Protection :

Benham and Reeves are members of The Property Ombudsman redress scheme and have Client Money protection with ARLA Propertymark. You can find more information on our website at <https://www.benhams.com/membership/>



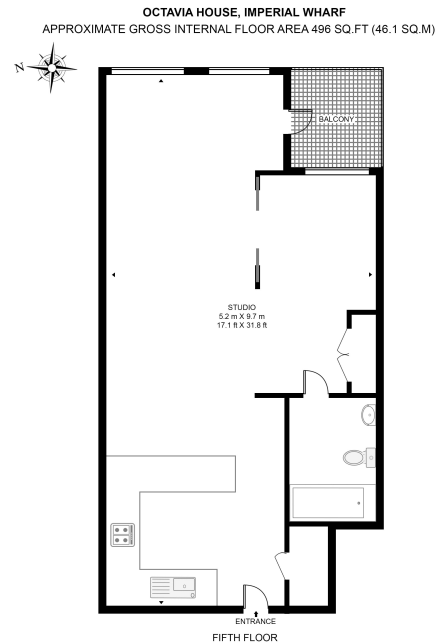
Benham&Reeves



Octavia House, Imperial Wharf, SW6

£508 per week, £2,200 per month + fees

www.benhams.com



This floor plan has been defined by the RICS Code of Measurement. This floor plan and all others are for approximate representative purposes only and upon usage is agreed to as such by the client.
WWW.NOVUSART.COM | TEL: 0203 974 1987 | EMAIL: info@novusart.com

Score	Energy rating	Current	Potential
92+	A		
81-91	B	82 B	84 B
69-80	C		
55-68	D		
39-54	E		
21-38	F		
1-20	G		

London branches open six days a week Mon - Sat

Canary Wharf | City | Colindale | Dartmouth Park | Ealing | Fulham
Hammersmith | Hampstead | Highgate | Hyde Park | Kensington | Kew
Knightsbridge | Nine Elms | Shoreditch | Southall | Surrey Quays
Wapping | Wembley | White City | Woolwich

International offices

China | Hong Kong SAR | India | Indonesia | Qatar | Malaysia | Middle East |
Singapore | South Africa | Thailand | Turkey



Benham & Reeves