



Benham & Reeves

Mahogany House, Imperial Wharf, SW6

£1,000 per week, £4,333 per month + fees

 3 Bedrooms  3 Bathrooms  Unfurnished

A large bright 5th floor air-conditioned apartment with managed parking, overlooking the River Thames. Situated within a landmark Riverside development, minutes from Imperial Wharf Overground Station.

Please [click here](#) for full detail

Property features

3 Double Bedrooms | 3 Bathrooms | Reception | Furnished | Fitted Kitchen | EPC-C | On site gym | 24 Hour Concierge | Nearby Imperial Wharf Tube Station

For more information about this property,
please call our Fulham branch on

020 7348 7620

Redress & Client Money Protection :

Benham and Reeves are members of The Property Ombudsman redress scheme and have Client Money protection with ARLA Propertymark. You can find more information on our website at <https://www.benhamandreeves.com/membership/>



Benham & Reeves

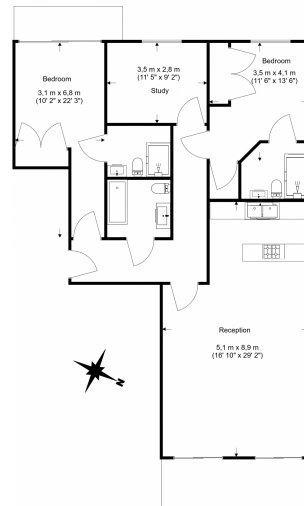


Mahogany House, Imperial Wharf, SW6

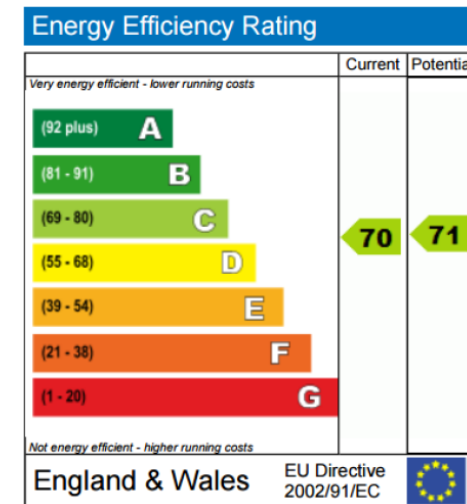
£1,000 per week, £4,333 per month + fees

www.benhams.com

5th Floor
Approx. Gross Internal Area: 124sq/m - 1330sq/ft



Floor Plan measurements are approximate and are for illustrative purposes only. While we do not doubt the floor plans accuracy, we make no guarantee, warranty or representation as to the accuracy and completeness of the floor plan.



London branches open six days a week Mon - Sat

Canary Wharf | City | Colindale | Dartmouth Park | Ealing | Fulham
Hammersmith | Hampstead | Highgate | Hyde Park | Kensington | Kew
Knightsbridge | Nine Elms | Shoreditch | Southall | Surrey Quays
Wapping | Wembley | White City | Woolwich

International offices

China | Hong Kong SAR | India | Indonesia | Qatar | Malaysia | Middle East |
Singapore | South Africa | Thailand | Turkey



Benham & Reeves