



Benham & Reeves

## **Lockgate Road, Imperial Wharf, SW6**

£623 per week, £2,700 per month + fees

 1 Bedroom     1 Bathroom     Furnished

A modern first floor apartment situated in a popular riverside development, with luxury facilities, in Fulham. The property is a short walk from Imperial Wharf Overground station.

Please [click here](#) for full detail

## Property features

**Wooden Flooring | Double Glazing | Furnished | Brand New | Air Conditioning | EPC-B | Balcony | 24HR Concierge | Fulham Broadway (District Line) underground station**

For more information about this property,  
please call our Property Management branch on

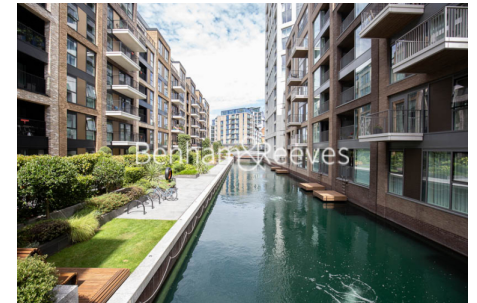
**020 7319 9740**

Redress & Client Money Protection :

Benham and Reeves are members of The Property Ombudsman redress scheme and have Client Money protection with ARLA Propertymark. You can find more information on our website at <https://www.benhams.com/membership/>



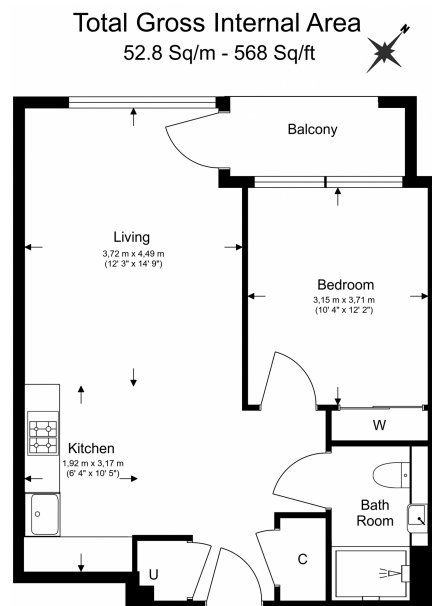
Benham & Reeves



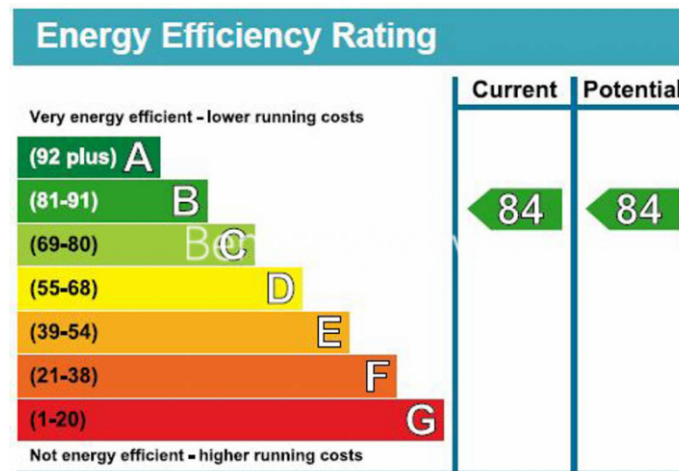
# Lockgate Road, Imperial Wharf, SW6

£623 per week, £2,700 per month + fees

www.benhams.com



Floor Plan measurements are approximate and are for illustrative purposes only. While we do not doubt the floor plans accuracy, we make no guarantee, warranty or representation as to the accuracy and completeness of the floor plan.



## London branches open six days a week Mon - Sat

Canary Wharf | City | Colindale | Dartmouth Park | Ealing | Fulham  
Hammersmith | Hampstead | Highgate | Hyde Park | Kensington | Kew  
Knightsbridge | Nine Elms | Shoreditch | Southall | Surrey Quays  
Wapping | Wembley | White City | Woolwich

## International offices

China | Hong Kong SAR | India | Indonesia | Qatar | Malaysia | Middle East |  
Singapore | South Africa | Thailand | Turkey



Benham & Reeves