



Benham & Reeves

Harbour Reach, Imperial Wharf, SW6

£612 per week, £2,650 per month + fees

🛏️ 2 Bedrooms 🚿 1 Bathroom 🛋️ Furnished

A modern, bright apartment boasting stunning River views situated in an impressive and popular development close to the areas of Fulham and Chelsea. Nearby transport options include Imperial Wharf Overground Station and Parsons Green Tube Station (District Line).

Please [click here](#) for full detail

Property features

Two Bedroom | Guest Room | Wooden Flooring | One Bathroom | Separate Kitchen | EPC-C | 24 hour Concierge | Open Plan Dining Room/ Lounge | Comfort Cooling | Imperial Wharf Overground Station

For more information about this property,
please call our Fulham branch on

020 7348 7620

Redress & Client Money Protection :

Benham and Reeves are members of The Property Ombudsman redress scheme and have Client Money protection with ARLA Propertymark. You can find more information on our website at <https://www.benhamandreeves.com/membership/>



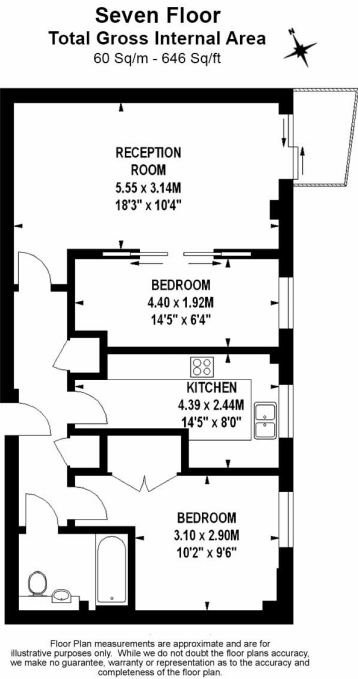
Benham & Reeves



Harbour Reach, Imperial Wharf, SW6

£612 per week, £2,650 per month + fees

www.benhams.com



Score	Energy rating	Current	Potential
92+	A		
81-91	B		
69-80	C	76 c	79 c
55-68	D		
39-54	E		
21-38	F		
1-20	G		

London branches open six days a week Mon - Sat

Canary Wharf | City | Colindale | Dartmouth Park | Ealing | Fulham
Hammersmith | Hampstead | Highgate | Hyde Park | Kensington | Kew
Knightsbridge | Nine Elms | Shoreditch | Southall | Surrey Quays
Wapping | Wembley | White City | Woolwich

International offices

China | Hong Kong SAR | India | Indonesia | Qatar | Malaysia | Middle East |
Singapore | South Africa | Thailand | Turkey

