



Benham & Reeves

The Boulevard, Imperial Wharf, SW6

£900 per week, £3,900 per month + fees

 3 Bedrooms  3 Bathrooms  Unfurnished

A smart and spacious 4th floor apartment, with lift access and negotiable secure parking, situated in an impressive and sought-after development in Fulham, moments from Imperial Wharf Overground station

Please [click here](#) for full detail

Property features

3 Double Bedrooms with Built-in Wardrobe | Large Reception Room with Dining Area | 24 H Concierge / Communal Garden/ 24 H Security | Large Balcony | Resident's Gym | EPC-B | 3 Bathrooms / 2 En-suite | Air Conditioning | Furnished | Nearby Imperial Wharf Overground station

For more information about this property,
please call our Fulham branch on

020 7348 7620

Redress & Client Money Protection :

Benham and Reeves are members of The Property Ombudsman redress scheme and have Client Money protection with ARLA Propertymark. You can find more information on our website at <https://www.benhams.com/membership/>



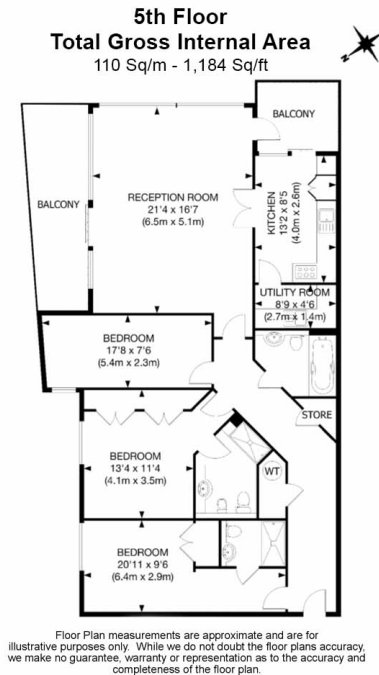
Benham&Reeves



The Boulevard, Imperial Wharf, SW6

£900 per week, £3,900 per month + fees

www.benhams.com



Score	Energy rating	Current	Potential
92+	A		
81-91	B	84 B	86 B
69-80	C		
55-68	D		
39-54	E		
21-38	F		
1-20	G		

London branches open six days a week Mon - Sat

Canary Wharf | City | Colindale | Dartmouth Park | Ealing | Fulham
Hammersmith | Hampstead | Highgate | Hyde Park | Kensington | Kew
Knightsbridge | Nine Elms | Shoreditch | Southall | Surrey Quays
Wapping | Wembley | White City | Woolwich

International offices

China | Hong Kong SAR | India | Indonesia | Qatar | Malaysia | Middle East |
Singapore | South Africa | Thailand | Turkey



Benham & Reeves