



Benham & Reeves

Lensbury Avenue, Imperial Wharf, SW6

£725 per week, £3,142 per month + fees

 2 Bedrooms  2 Bathrooms 
Furnished/UnFurnished

Contemporary and spacious air-conditioned ground floor flat with 24-hour security and direct River views, situated in a prestigious riverside development in Fulham. Imperial Wharf Station is approximately 0.1 miles away.

Please [click here](#) for full detail

Property features

2 Bedrooms | 2 Bathrooms | Open Plan Reception | Furnished or Unfurnished | Fitted Kitchen | EPC-D | Gym Balcony | 24 Hour concierge | Nearby Imperial Wharf Overground station

For more information about this property,
please call our Fulham branch on

020 7348 7620

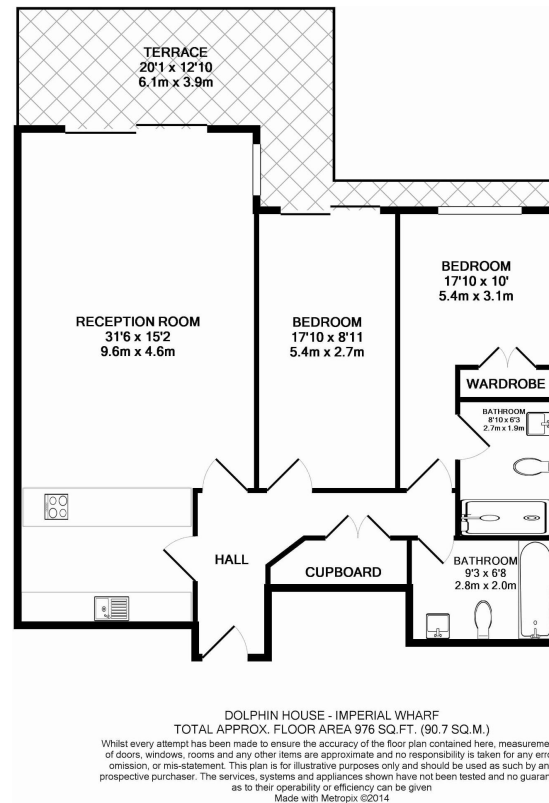




Lensbury Avenue, Imperial Wharf, SW6

£725 per week, £3,142 per month + fees

www.benhams.com



London branches open six days a week Mon - Sat

Canary Wharf | City | Colindale | Dartmouth Park | Ealing | Fulham
Hammersmith | Hampstead | Highgate | Hyde Park | Kensington | Kew
Knightsbridge | Nine Elms | Shoreditch | Southall | Surrey Quays
Wapping | Wembley | White City | Woolwich

International offices

China | Hong Kong SAR | India | Israel | Malaysia | Middle East | Pakistan
Qatar | Singapore | South Africa | Thailand | Turkey



Benham & Reeves