



Benham & Reeves

Chamberlain Court, Ironworks Way, E13

£404 per week, £1,750 per month + fees

 1 Bedroom  1 Bathroom  Furnished

MODERN furnished apartment situated within a quality residential development, with easy access to Canary Wharf and Central London. Located a brief walk from Upton Park and Upton Park tube station, with direct trains to the City.

Please [click here](#) for full detail

Property features

Bright Livingroom | Large Double Bedroom | Insert Reception | Fully Fitted Kitchen, including dishwasher | Wooden Flooring Throughout | EPC-B | Floor to Ceiling Windows | High Energy Efficiency Rate | Modern Furnishing | 7-minute walk from Upton Park tube station

For more information about this property,
please call our Canary Wharf branch on

020 8036 3200

Redress & Client Money Protection :

Benham and Reeves are members of The Property Ombudsman redress scheme and have Client Money protection with ARLA Propertymark. You can find more information on our website at <https://www.benhams.com/membership/>



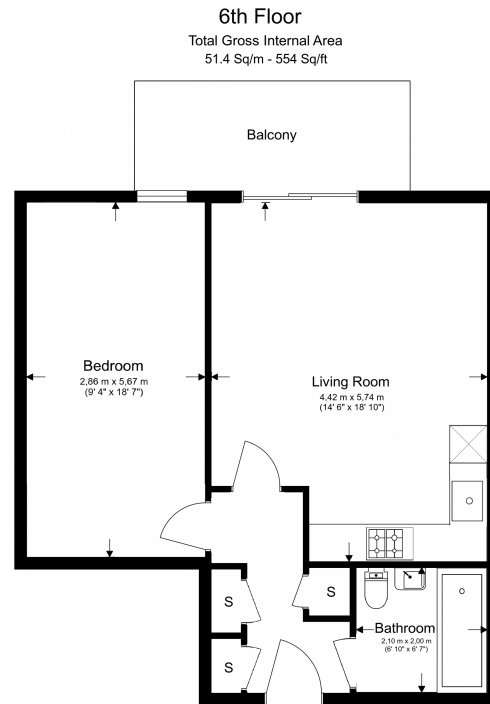
Benham & Reeves



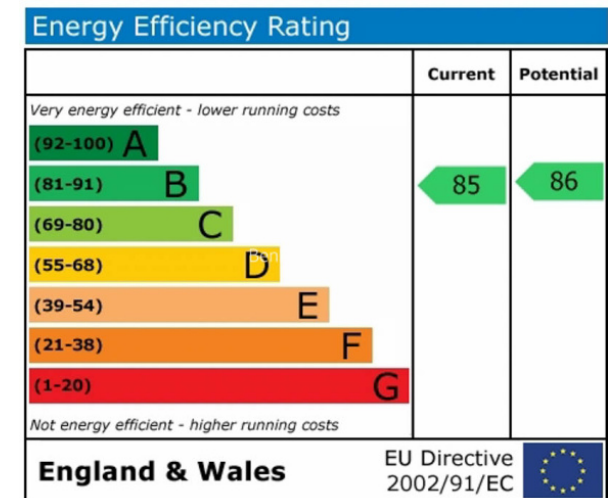
Chamberlain Court, Ironworks Way, E13

£404 per week, £1,750 per month + fees

www.benhams.com



Floor Plan measurements are approximate and are for illustrative purposes only. While we do not doubt the floor plans accuracy, we make no guarantee, warranty or representation as to the accuracy and completeness of the floor plan.



London branches open six days a week Mon - Sat

Canary Wharf | City | Colindale | Dartmouth Park | Ealing | Fulham
Hammersmith | Hampstead | Highgate | Hyde Park | Kensington | Kew
Knightsbridge | Nine Elms | Shoreditch | Southall | Surrey Quays
Wapping | Wembley | White City | Woolwich

International offices

China | Hong Kong SAR | India | Indonesia | Qatar | Malaysia | Middle East |
Singapore | South Africa | Thailand | Turkey



Benham & Reeves