



Benham & Reeves

Baltimore Wharf, Isle of Dogs, E14

£692 per week, £3,000 per month + fees

 2 Bedrooms  2 Bathrooms  Furnished

Modern Duplex apartment situated in a sought after development near South Quay DLR station which offers direct trains running to Canary Wharf and Bank.

Please [click here](#) for full detail

Property features

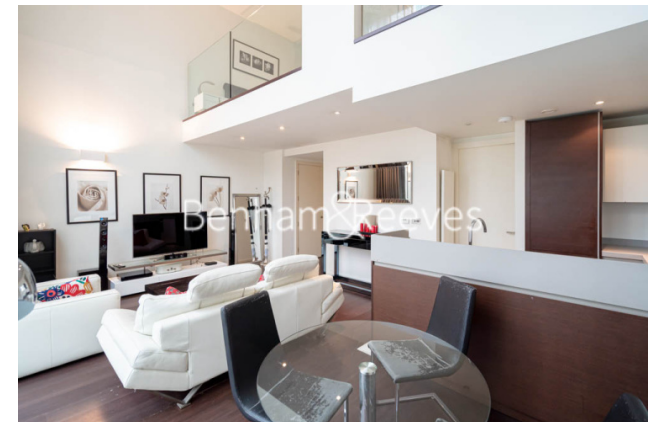
Two Double Bedrooms | Two Bathrooms (En-suite) | Fitted Kitchen | Duplex Apartment | Open Plan Living Room | EPC-C | Furnished | Gym and Swimming Pool | 24 Hour Concierge | Nearby South Quay and CrossHarbour DLR Station

For more information about this property,
please call our Canary Wharf branch on

020 8036 3200

Redress & Client Money Protection :

Benham and Reeves are members of The Property Ombudsman redress scheme and have Client Money protection with ARLA Propertymark. You can find more information on our website at <https://www.benhamandreeves.com/membership/>



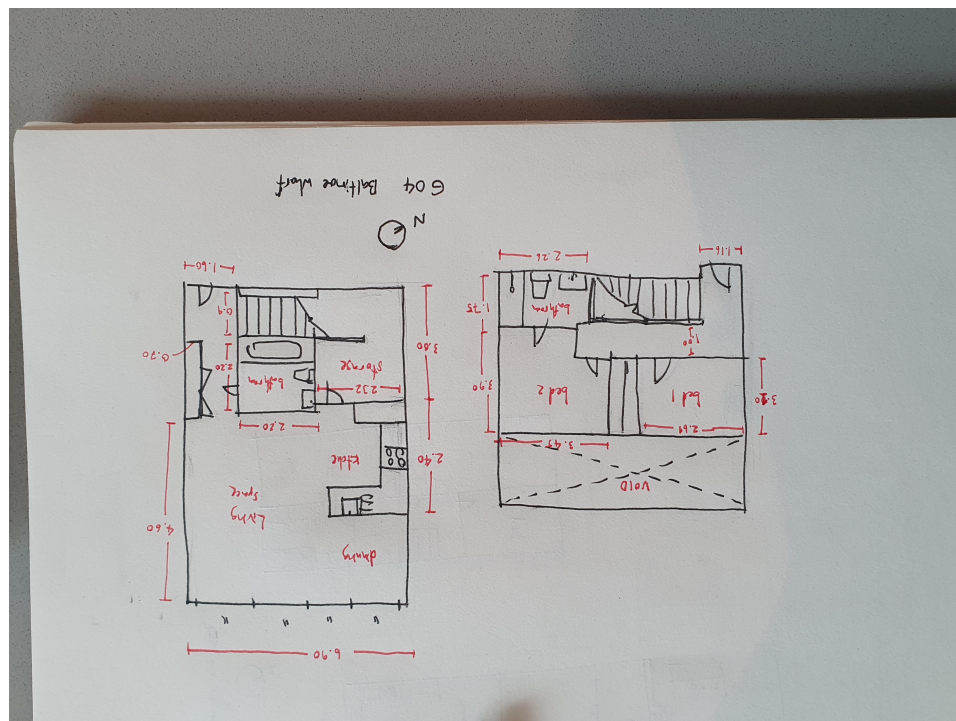
Benham & Reeves



Baltimore Wharf, Isle of Dogs, E14

£692 per week, £3,000 per month + fees

www.benhams.com



Score	Energy rating	Current	Potential
92+	A		
81-91	B		
69-80	C	77 C	78 C
55-68	D		
39-54	E		
21-38	F		
1-20	G		

London branches open six days a week Mon - Sat

Canary Wharf | City | Colindale | Dartmouth Park | Ealing | Fulham
Hammersmith | Hampstead | Highgate | Hyde Park | Kensington | Kew
Knightsbridge | Nine Elms | Shoreditch | Southall | Surrey Quays
Wapping | Wembley | White City | Woolwich

International offices

China | Hong Kong SAR | India | Indonesia | Qatar | Malaysia | Middle East | Pakistan
Singapore | South Africa | Thailand | Turkey

