



Benham & Reeves

Rosebery Avenue, Islington, EC1

£693 per week, £3,003 per month + fees

 2 Bedrooms  1 Bathroom  Furnished

Delightful 2nd floor apartment situated within a beautiful period conversion with stunning architecture. Located minutes from Exmouth and a short walk from Angel.

Please [click here](#) for full detail

Property features

Victorian Period Building Conversion | Wooden Flooring, Sash Pane Windows & High Ceilings | Bright Open Plan Reception Overlooking the Gardens | Separate Fitted Kitchen with Integrated Appliances | Double Bedrooms with Spacious Wardrobes | EPC-C | Modern Family Size Bathroom | Concierge & Residents Gym | Angel Station Nearby

For more information about this property,
please call our City branch on

020 7213 9700

Redress & Client Money Protection :

Benham and Reeves are members of The Property Ombudsman redress scheme and have Client Money protection with ARLA Propertymark. You can find more information on our website at <https://www.benhamandreeves.com/membership/>



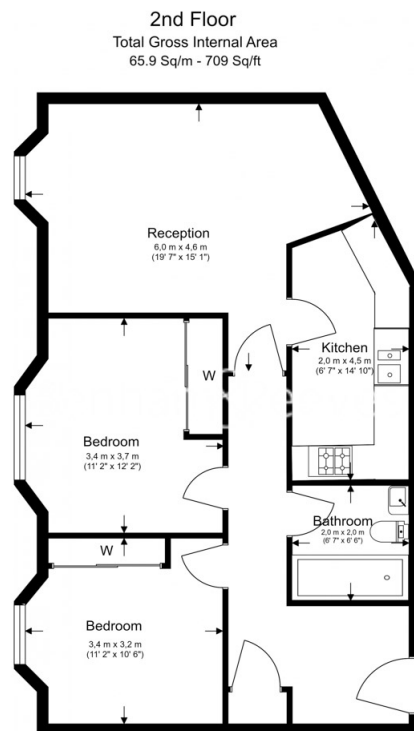
Benham & Reeves



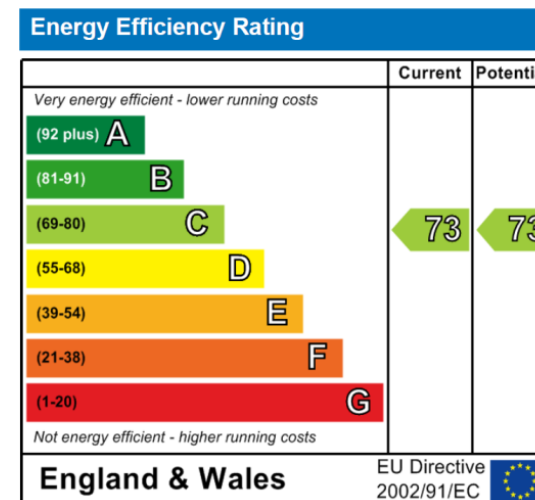
Rosebery Avenue, Islington, EC1

£693 per week, £3,003 per month + fees

www.benhams.com



Floor Plan measurements are approximate and are for illustrative purposes only. While we do not doubt the floor plans accuracy, we make no guarantee, warranty or representation as to the accuracy and completeness of the floor plan.



London branches open six days a week Mon - Sat

Canary Wharf | City | Colindale | Dartmouth Park | Ealing | Fulham
Hammersmith | Hampstead | Highgate | Hyde Park | Kensington | Kew
Knightsbridge | Nine Elms | Shoreditch | Southall | Surrey Quays
Wapping | Wembley | White City | Woolwich

International offices

China | Hong Kong SAR | India | Indonesia | Qatar | Malaysia | Middle East | Pakistan
Singapore | South Africa | Thailand | Turkey



Benham & Reeves