



Benham & Reeves

Highbury Park, Islington, N5

£495 per week, £2,145 per month + fees

 1 Bedroom  1 Bathroom  Furnished

A stunning 3rd floor furnished apartment, situated within a luxury development with private courtyard a short walk from both Arsenal and Highbury & Islington

Please [click here](#) for full detail

Property features

One double bedrooms | One Bathroom | One Reception Room | Furnished | Fully Fitted Modern Kitchen / Reception Room | EPC-B | Concierge | Communal Gardens | Lift | Close to Arsenal and Highbury /Islington Tube Stations

For more information about this property,
please call our Highgate branch on

020 8341 2335

Redress & Client Money Protection :

Benham and Reeves are members of The Property Ombudsman redress scheme and have Client Money protection with ARLA Propertymark. You can find more information on our website at <https://www.benhamandreeves.com/membership/>



Benham & Reeves

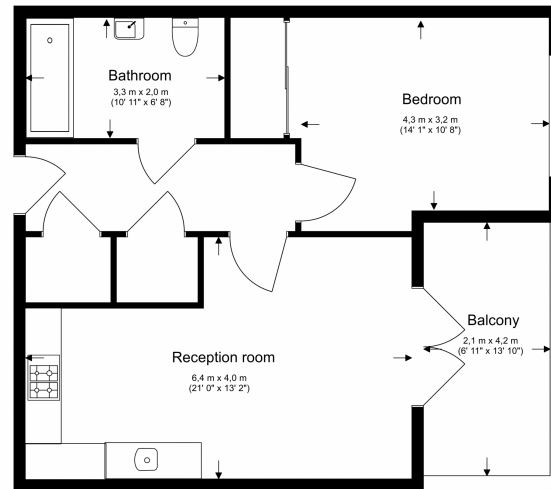


Highbury Park, Islington, N5

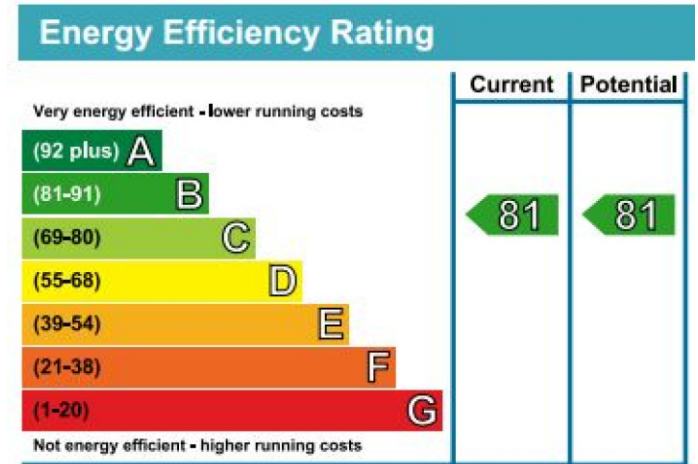
£495 per week, £2,145 per month + fees

www.benhams.com

4th Floor Total Internal Gross Area 52.9 Sq/m - 569 Sq/ft



Floor Plan measurements are approximate and are for illustrative purposes only. While we do not doubt the floor plans accuracy, we make no guarantee, warranty or representation as to the accuracy and completeness of the floor plan.



London branches open six days a week Mon - Sat

Canary Wharf | City | Colindale | Dartmouth Park | Ealing | Fulham
Hammersmith | Hampstead | Highgate | Hyde Park | Kensington | Kew
Knightsbridge | Nine Elms | Shoreditch | Southall | Surrey Quays
Wapping | Wembley | White City | Woolwich

International offices

China | Hong Kong SAR | India | Indonesia | Qatar | Malaysia | Middle East | Pakistan
Singapore | South Africa | Thailand | Turkey



Benham & Reeves