



Benham & Reeves

Central Avenue, Hammersmith And Fulham, SW6

£1,731 per week, £7,500 per month + fees

 4 Bedrooms  2 Bathrooms  Furnished

A Stunning, large apartment, located along the River Thames in the Fulham Riverside development. Imperial Wharf overground station is within walking distance and has excellent travel links around London.

Please [click here](#) for full detail

Property features

Contemporary 2nd, 3rd, and 4th floor riverside apartment | 2 Chic shower rooms (1 ensuite), bathroom and a WC | High spec kitchen with Miele appliances and fabulous dining | 4 Double bedrooms with built-in wardrobes and a view | Spacious terrace with seating space and a view of the pier | EPC-B | 2 Elegant receptions with high arching ceilings and windows | Landscaped communal courtyard and easy access to the Thames | Allocated parking space available upon separate negotiation | Nearby Imperial Wharf overground Station

For more information about this property,
please call our Fulham branch on

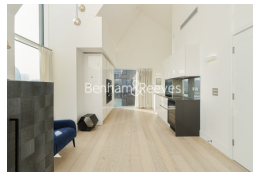
020 7348 7620

Redress & Client Money Protection :

Benham and Reeves are members of The Property Ombudsman redress scheme and have Client Money protection with ARLA Propertymark. You can find more information on our website at <https://www.benhamandreeves.com/membership/>



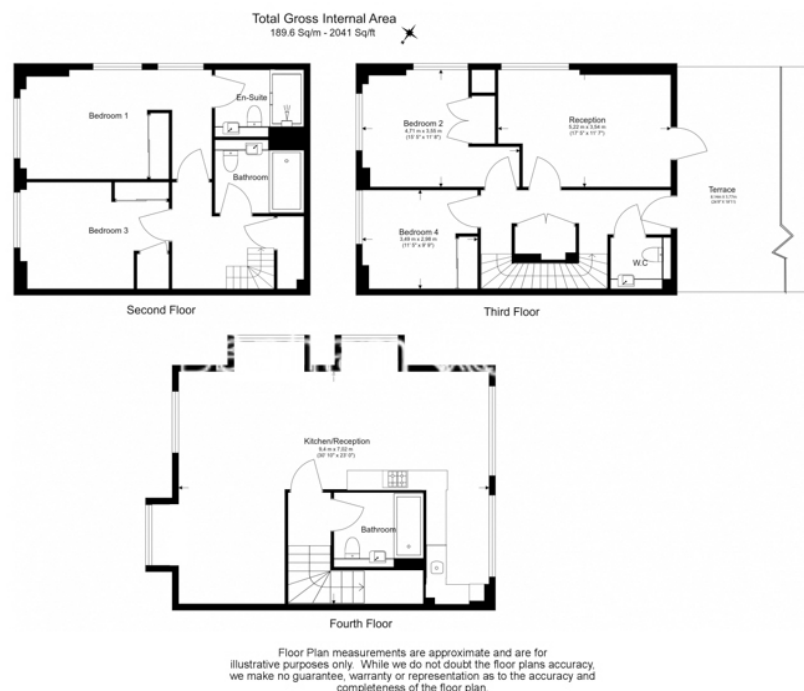
Benham & Reeves



Central Avenue, Hammersmith And Fulham, SW6

www.benhams.com

£1,731 per week, £7,500 per month + fees



Score	Energy rating	Current	Potential
92+	A		
81-91	B	81 B	81 B
69-80	C		
55-68	D		
39-54	E		
21-38	F		
1-20	G		

London branches open six days a week Mon - Sat

Canary Wharf | City | Colindale | Dartmouth Park | Ealing | Fulham
Hammersmith | Hampstead | Highgate | Hyde Park | Kensington | Kew
Knightsbridge | Nine Elms | Shoreditch | Southall | Surrey Quays
Wapping | Wembley | White City | Woolwich

International offices

China | Hong Kong SAR | India | Indonesia | Qatar | Malaysia | Middle East | Pakistan
Singapore | South Africa | Thailand | Turkey



Benham & Reeves